



MARY ROSE TRUST

## Annual Review 2013

Learning | Conservation | Heritage









## CLARENCE HOUSE

2013 is an extraordinary year in the 500 year history of the Mary Rose. From her sinking during battle in 1545, to her rediscovery in 1971 and raising from the sea bed in 1982, the last thirty years of painstaking work has finally paid off. The new Mary Rose Museum, which exhibits both the ship and her incredible artefacts, is at long last open to the public.

The exhibition itself is outstanding, displaying many thousands of objects, most of which have never been seen before. The quality and intensely personal nature of the objects found onboard is breathtaking and the collection gives the finest insight into life 500 years ago.

I can only offer my congratulations to all those involved in the creation of this new museum. The teamwork amongst the Trust staff and volunteers, together with the many companies involved in helping them in this latest stage of the project, has been a model for others to follow.

To raise the £35 million needed for this huge enterprise is a true achievement in this difficult economic climate. I would like to thank all the generous donors for their contributions – the Heritage Lottery Fund in particular – but also all the trusts and foundations who contributed, together with thousands of individuals. The Mary Rose Trust has now established a Permanent Endowment Fund to enable it to continue its excellent work, especially in learning and outreach, and in research.

The dreams that were expressed so forcibly by the pioneers, Alexander McKee and Margaret Rule, have now become a reality. The members of staff of the Mary Rose Trust have shown great professionalism and tremendous determination to bring the project to this important point and they are owed immense gratitude and warmest congratulations.

A handwritten signature in black ink, appearing to read 'Charles', followed by a long, horizontal, wavy line.



# Chairman & Chief Executive Foreword

This last year has been momentous for the Mary Rose Trust, and the achievements have been of national and international importance. The Mary Rose Project has been an exemplar of both excavation and conservation over its thirty plus year history, but experts from afar now declare the new museum to be the exemplar of exhibition for future generations. New standards have been set, and the success of our ambition has been confirmed by the early comments being received.

Elsewhere in this review you will read more about the challenges that were met in reaching this point. Rather than rest on our laurels, we now look ahead to the challenges still awaiting us, while the operations team settle in to learn how best to run our current programme at its optimum level.

The drying programme undoubtedly has risks attached, but the expert conservation team is monitoring progress closely. Once complete in four or five years time, we look ahead to a challenging programme of removing the 'hot box' within which the hull is being conserved. We have no doubt that this will create a yet more spectacular museum, in which visitors will have a clear view through nothing but the air into the ship itself, devoid of all spraying and drying tubes. At this stage, we can then consider returning other timbers to join the existing hull: the rudder, the stern, the gunport lids, the ladders, bulkheads and cabins. Gradually we can rebuild this ship into a much more complete and exciting state.

Once fully established, another aspiration will be to reduce the size of the supporting frame, retaining its strength but increasing the visibility of the hull - especially from the outboard side. Then the Trust can hope to have a gallery taking the visitors along the length of the ship's side. In the fullness of time, a walkway under the ship itself may be possible. The exhibition thus has a series of improvements that now can be contemplated in the next decade. Who knows, maybe more of the structure, including the forecastle, can be raised from the seabed and returned to the ship.

In tandem with this, much research is opening up to the Trust and is now higher in our priorities. The human remains, now boldly explained more fully in our exhibition, can be studied scientifically for the secrets they can reveal. Medical research is included within our ambitions and we will be working with leading universities in this area. Similarly, our Head of Collections is already involved in pioneering work in new forms of conservation techniques, which could revolutionise the affordability and timescales of future projects. These are just two examples of a number of areas that show great promise.

The learning and outreach programmes have achieved enviable results in our old museum, so this coming year will be a proving ground for our innovative programmes and we expect to develop them considerably. Launching our Scanning Electron Microscope on the website this summer for schools and colleges to control provides a step-change in our science offer, which already is seen to be ground-breaking. All the results to date look to be exceptionally exciting.

Having achieved the extraordinary success of meeting our fundraising target of raising the full £35 million for the capital appeal, we now turn our attention to creating a Permanent Endowment Fund to ensure the security of all our activities into the future. Thanks, yet again, to the Heritage Lottery Fund - this time for a £1m Catalyst grant to matchfund the first £1m we raise - our attention is turned to using the excitement of the new museum's opening to gain support. In particular, the highly successful Flag Officers' Club is recruiting to help this new fund.

The achievements are notable and the future is excitingly challenging. The Mary Rose Trust enters the next chapter well set and full of confidence and determination. But above all, we acknowledge, with thanks that our greatest strength is in the highly professional and dedicated staff and volunteer force that continue to make these endeavours possible.



# New museum opening

## **“One of the most complex heritage projects to be undertaken in Europe”**

Constructing the new museum over and around the Mary Rose whilst she remained under spray in the Grade 1 scheduled dry dock presented numerous challenges. However, the completion of the building was only the beginning of the story. In order to get to the stage of opening to the public, a number of major strands of work needed to come together: the conservation of the ship reaching the drying phase; thousands of additional objects ready for display; the complex plant and systems in the museum providing stable environmental conditions; the operational fit-out of the café, retail and behind the scenes spaces; and finally the installation of the objects on their individual mounts (designed and produced in-house) along with all the exhibition graphics and audio visual displays.

The largest artefact, the ship, had undergone over 30 years of spraying, the last 19 years with increasing molecular weights of polyethylene glycol (PEG) solution. In the closing stages it proved a struggle to reach the required concentration of PEG in the outer layers of the timbers, but short periods of work were allowed in the difficult environment inside the ‘hotbox’ to construct the network of stainless steel drop rods and anodized aluminium tracks to support the air ducting during the drying phase. As soon as the required PEG concentration was achieved and the support structure was installed, the sprays were switched off and windows were cut into the ‘hotbox’ revealing the ship to the public, this time during its final ‘drying’ phase of conservation.

Meanwhile, many hundreds of smaller artefacts were completing their conservation in PEG tanks and large vacuum freeze driers before being reconstructed into barrels, gun carriages and a myriad of other objects. Some required specialist reconstruction and others benefitted from the production of the ‘missing bits’ in frosted acrylic to make them sufficiently complete for display and to ease interpretation.

Owing to the fact that they spent over 400 years under the sea, all the objects required extremely accurate control of temperature and humidity, which in turn called for highly specialised environmental control in each of the display cases and precise circulation of chilled water throughout the museum. The large display case along the length of the ship, 34 meters long and four decks high, required considerable monitoring and testing before any objects could be installed. Once conditions were stable inside the tight environmental limits, the big guns and their carriages weighing as much as three tons were gently lifted into place using a specially designed hydraulic contraption nicknamed ‘Sumo’ - all achieved without damaging the extensive display case glazing a matter of millimeters away.

The Trust’s long-standing exhibition design team was enhanced by two specialist mount-makers, and together they designed and created the contents of the display cases, skilfully using acrylic to enhance some of the incomplete artefacts. At the same time, the curatorial staff tackled the demanding task of enabling the objects to tell their fascinating stories.

Finally, the mass of objects were installed in their display cases on their finely crafted mounts, together with their interpretive graphics and audio visual displays. However, the full effect of these thousands of objects and carefully worded texts and elegant graphics really only came to life once the fibre-optic lighting was focused. At this point these amazing Tudor artefacts could be seen glowing with their full richness, in context with the ship, to fulfil the dreams of all those involved with the Mary Rose since the first dive on the wreck site nearly half a century ago.







Janet Myers Photography



# Learning and Outreach

The launch of the new museum has opened up a whole new world of opportunities for learning at the Mary Rose. History and Science run parallel in the new Stavros Niarchos Foundation Learning Centre with its classroom and laboratory. Each can comfortably accommodate whole classes. The ever popular Gun Drill moves centre-stage into the upper gallery.

Two preview days for primary, secondary and A Level teachers from across the region were greeted with great enthusiasm. Teachers were unanimous in their praise:

***“The new Museum and the facilities that it now offers to schools are outstanding. I was honestly blown-away by what I saw - it far exceeded what I was expecting. It was clear from my visit that the new museum is building upon the success of the old one.”***

**John Pitt, Barncroft Primary School, Havant**

***“The museum is in a class of its own. To be able to experience first hand the life of a sailor on board will prove to be something that no one will forget whether child or adult. The design of the museum and the display of artefacts takes you back in time and creates an awe and wonder that I have not seen for quite a time. It is a museum and heritage to be exceedingly proud of. It is hard to describe how brilliant and superb the museum is.”***

**Julie Summerfield, Headteacher, Horndean Technology College**

***“As a History teacher the exhibition was utterly amazing, and it was so fantastic to see the principles that we strive for of ‘bringing history to life’ embodied throughout.”***

**Josephine Harding, Perins School, Winchester**

New opportunities for adults, youth groups and families will encourage a wide variety of people to enjoy the Mary Rose story.

Special needs groups from across the region will benefit from improved access to the museum and Stavros Niarchos Foundation Learning Centre. The outreach programme for groups that find it hard to visit the museum continues to flourish. Thousands of people in Portsmouth, Hampshire and further afield have enjoyed the mix of talks and practical handling sessions. People with visual impairments, stroke survivors, adults with learning difficulties and dementia patients all benefit from an improved sense of wellbeing.

***“Everyone really had a great time and it was wonderful to see so much interaction. They all got so much out of it. It was great to hear one of our clients say at the end of your presentation, ‘I’ve talked more today than I have in the last two weeks.’”***

**Hayling Island Group**

This special aspect of the department’s work will continue to be a distinctive feature of what we do.

The new museum has reinforced the national profile of the Mary Rose education programme. Participation in the Big Bang Science Fair 2013 in London, attended by 60,000 people, and support for the Shakespeare’s Birthplace Trust Shakespeare Week initiative have put the Trust on the national stage.

We look forward to welcoming old friends and new to the Mary Rose Museum.

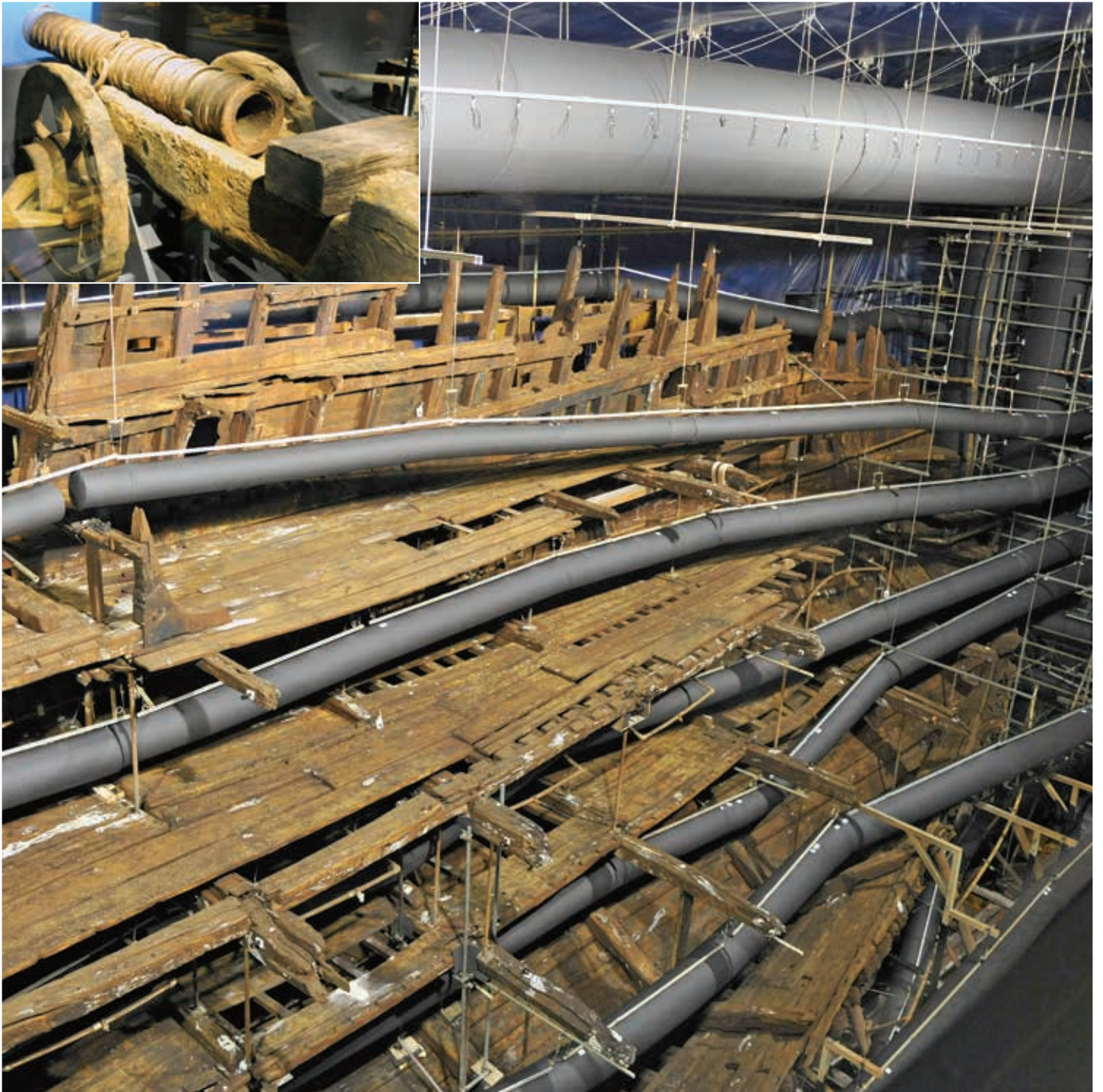
# Conservation

The magnificent starboard section of the Mary Rose ship can now be seen drying for the first time since she was lost in 1545. It is a significant moment in the extraordinary history of the ship, and one is very conscious of all the lives that this ship has touched over the years. Many of them have physically left their mark on the ship, both the crew who perished leaving their identified bowls and property, and Henry VIII, whose Tudor rose can be seen on some of the ordnance. We are aware of the thousands of people who have been involved in the project since the 1960s to bring us to the point today, where the conservation of the ship is in the last stage of drying. Particularly we remember Dr Glenn McConnachie who was responsible for the design parameters for the whole air drying process. Today Dr Eleanor Schofield who joined the Trust in June 2012 has taken over responsibility for the air drying under the supervision of Professor Mark Jones. He celebrated 30 years at the trust this year.

All the attention over the last few years has been on the form and substance of the new museum as it emerged from the drydock. What is sometimes overlooked is that throughout the construction the conservation of the ship continued at the centre of a complicated construction site. Inside the hotbox, in an exceptionally demanding environment, the ship hall team of 4 technicians completed the final stages of PEG impregnation and prepared for the air drying. At the same time as managing the final stages of the ship conservation our 3 specialist conservators prepared many thousands of artefacts for display. In the original museum less than 10% of the recovered artefacts were on display. In the new museum many thousands more artefacts will be displayed in context, many never seen before. Preparing all this material has been a huge task. The remarkable state of preservation of some of these articles can be confusing because everything wooden on display in the new museum is a conserved original. There are no organic replicas on display.









# Archaeological services

**Excavations carried out by the Mary Rose Trust marked a turning point for maritime archaeology in the UK.**

Mary Rose Archaeological Services (MRAS) can now accept new commissions. For the last six years the capacity of the Trust to take in new conservation projects has been constrained because the priority was to prepare artefacts and the ship for the new museum. Six years ago our experience was considerable but our resources were modest. Today MRAS has access to more maritime archaeological conservation capacity than any other facility in Europe, if not the world.

For some time the Mary Rose Trust has been the lead UK Museum Maritime Archaeology and Conservation Strategy (UKMMCS). We are now able to fulfil our responsibility. Today as a result of our research with maritime museums and universities around the world, MRAS can make available to the archaeological community the latest organic waterlogged conservation technology. We have acquired over the last 35 years unrivalled experience conserving the Mary Rose hull and the associated 19,000 artefacts recovered from the Solent wreck site. So in 2013 we not only have more conservation capacity and resources, we have more experience.



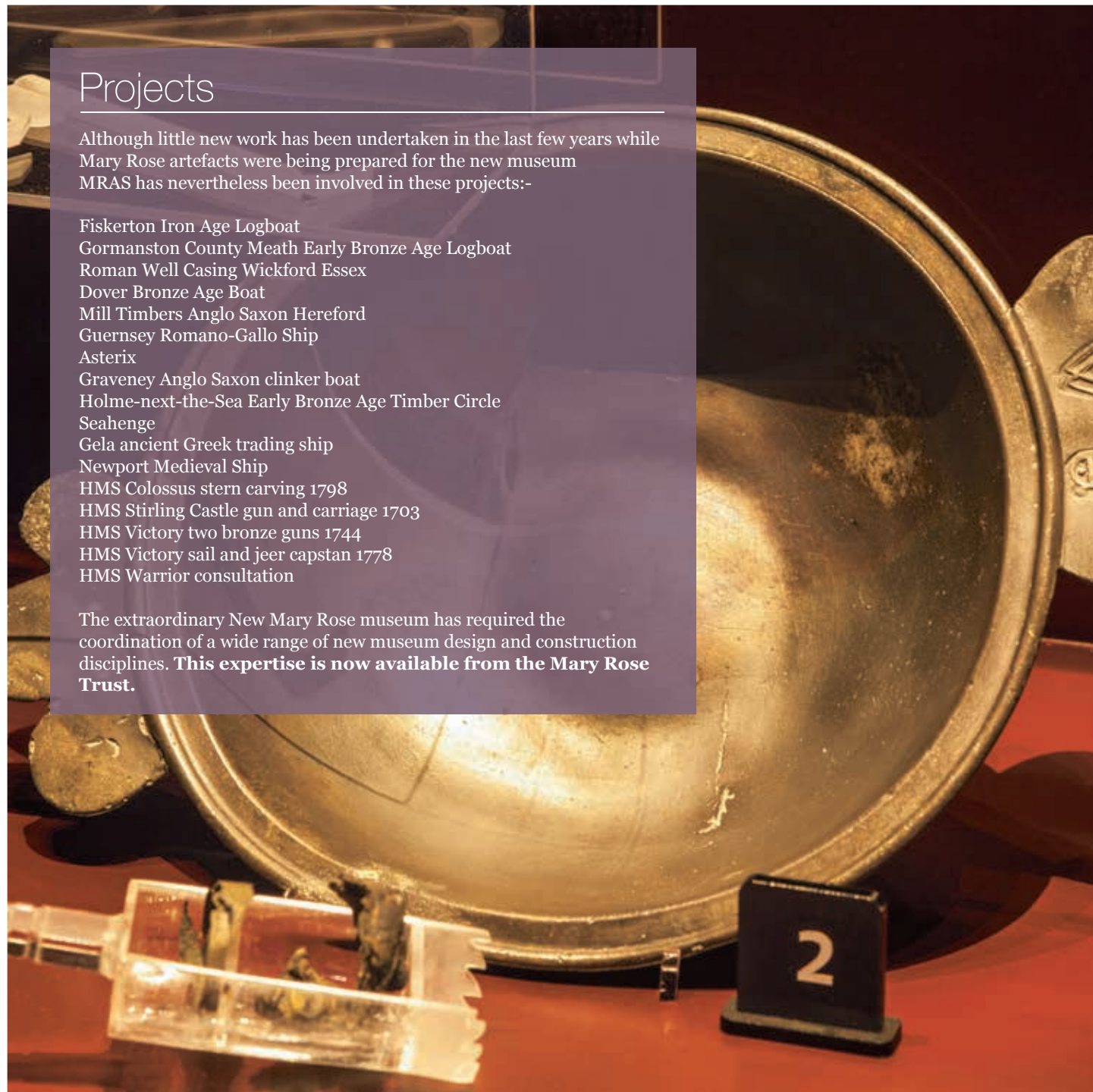


## Projects

Although little new work has been undertaken in the last few years while Mary Rose artefacts were being prepared for the new museum MRAS has nevertheless been involved in these projects:-

Fiskerton Iron Age Logboat  
Gormanston County Meath Early Bronze Age Logboat  
Roman Well Casing Wickford Essex  
Dover Bronze Age Boat  
Mill Timbers Anglo Saxon Hereford  
Guernsey Romano-Gallo Ship  
Asterix  
Graveney Anglo Saxon clinker boat  
Holme-next-the-Sea Early Bronze Age Timber Circle  
Seahenge  
Gela ancient Greek trading ship  
Newport Medieval Ship  
HMS Colossus stern carving 1798  
HMS Stirling Castle gun and carriage 1703  
HMS Victory two bronze guns 1744  
HMS Victory sail and jeer capstan 1778  
HMS Warrior consultation

The extraordinary New Mary Rose museum has required the coordination of a wide range of new museum design and construction disciplines. **This expertise is now available from the Mary Rose Trust.**



# Hospitality at the museum

As we look to maximise the commercial potential of the new museum, corporate and private events will become essential to our business model.

We have appointed a Hospitality Co-Ordinator to ensure we can maximise this area.

The Admiral's Gallery is licensed for dinners for 100 guests and up to 150 for drinks receptions, and with ambient lighting and flowers, the space looks quite simply stunning. The entire museum is available for private viewings during the evening with up to 380 guests enjoying drinks as they tour the world class museum.

Our Wardroom can hold 18 guests for meetings or private lunches/dinners and can be used during normal operating hours.

Both spaces have exclusive access to the Bridge Balcony with outstanding views of HMS Victory and Portsmouth Harbour.





# New cafe at the museum

As at any museum, looking after our visitors is key and the chance to refresh before, during or after their visit with a good coffee and cake is essential.

At the new museum we are delighted to be working in partnership with Ampersand to manage our cafe.

With vibrant colour chairs, full floor to ceiling glass windows and an amazing terrace looking out to HMS Victory and the Harbour, the Mary Rose Cafe is the place to be in Portsmouth Historic Dockyard.

Our coffee is provided by Paddy and Scott's, a small independent British company based near Framlingham in Suffolk, who ethically and fair-trade source their coffee (their head barista and training manager has visited the plantations himself). All their coffee is roasted in Britain and we are the first museum they have worked with. Our tea is provided by All About Tea, a local company who blend their tea in their small Portsmouth Tea Factory, with the tea specially blended to taste wonderful with Portsmouth water.

Lunch comes in the form of freshly prepared rolls and sandwiches, or visitors can enjoy a freshly carved roast baguette with a different choice of meat each day.



# Retail operation at new museum

Over the past 12 months, an amazing amount of work has gone into sourcing products for the shop in the new museum.

The shop has a light and airy feel to it and light wooden shop fittings make it a perfect space for us to maximise retail opportunities at the new museum.

A survey conducted of our visitors has shown that they want to purchase exclusive items they can not purchase elsewhere, and therefore we have worked with a number of both local and national companies to develop a range of Mary Rose exclusives.

Emma Bridgewater has designed and developed a wonderful Cowdray inspired mug and biscuit tin with a tea caddy and a tea towel to follow featuring our artefacts.

Rose labelled wine, and our tea caddy is filled with tea from the Portsmouth Tea Factory. Port and Lemon, an art company based in Gosport, have developed a range of 'Hatch' products.

TM Clothing of Petersfield have developed our popular Hatch cuddly toy and a range of original t-shirts, rugby shirts and other exclusive new uniform at the new Mary Rose Museum.

With our new museum looking so amazing it is essential the staff look great too, and thanks to the generous sponsorship and production skills of TM Clothing of Petersfield we have a brand new uniform for all our staff and volunteers.

Using the brand colours the new uniform comprising pink shirts and charcoal jumpers both featuring our Trust logo ensures the crew will always look smart and recognisable to visitors.





# Museum Staff

We have made the move to our new museum, after 29 years. It couldn't be more different; new uniforms, new layout, more artefacts on display, everything is bigger, better and very different. Everything we grew accustomed to in the old museum has had to be relearned. Apart from thousands more artefacts, new health and safety procedures, a new training programme, we have had to learn to work in a completely different building. The sight of the ship drying for the first time since 1545 with the guns displayed in context has changed everything. We have all enthusiastically made the change and are now busy welcoming our first visitors.

# Museum Volunteers

We are the volunteers and it's an honour and a pleasure to work in this inspiring new building. There are now about 80 volunteers but we are always on the lookout for more. Come and join us, we have far more varied roles in the new museum, you will be doing something important and useful and every day has new interesting challenges. It is important because we know the Mary Rose couldn't do without us.

# Website and App pages

With a world class and modern museum at our disposal it is essential that all our interfaces with the public reflect this and during the past year the Trust has developed and launched a new website. Working with the digital agency TDA our new website is visitor friendly and easily accessible to anyone from around the world with either a passing interest or huge fascination with the ship. We can update the site locally and add new stories quickly and easily to keep the site up to date and fresh for visitors.

Since its launch in January the new website has welcomed over 70,000 visitors from across the world.

In May, the museum launched its first App, which is available on both Apple products via the App Store or on Android. The App is free to download and features the latest news, visitor information, history of the ship and exclusive video content. The App was developed in Partnership with local company Mobildaze.



# From the Chairman, Portsmouth Historic Dockyard

## What a wonderful year for the Mary Rose team!

What a wonderful year for the Mary Rose team! The long held dream is realised with the opening of the new state-of-the-art Museum to worldwide acclaim on May 31st 2013. *'England's Pompeii'*, *'Tudor time capsule'*; *'World class museum'*; *'Artefacts over 500 years old, so well preserved visitors can't believe they're real'*; *'Has the 'wow' factor'*; are just some of the remarks I have seen and heard and all are well deserved. All the members of the team from divers, archaeologists, conservators, museologists, architects, designers, support staff, management, donors, volunteers and professionals are to be congratulated on working together to realise such a magnificent project.

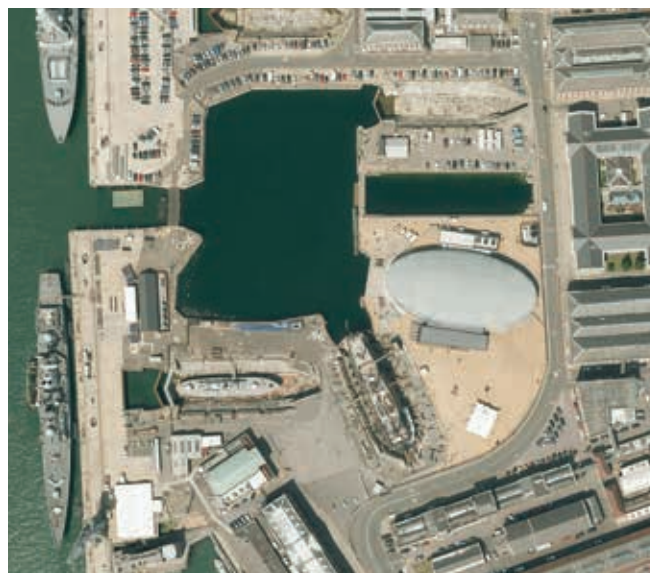
It is an honour for me as newly appointed Chairman of Portsmouth Historic Dockyard to have been invited to share in the launch events, and to come into my role with the boost of such a tremendous high point for all the partners in the Dockyard - the other landmark warships who followed Mary Rose, HMS Victory 1778 and HMS Warrior 1860, the National Museum of the Royal Navy, due to open a modern new gallery herself next year, Action Stations, Harbour Tours and Portsmouth Naval Base Property Trust, landlord to us all.

We join in wishing the new Mary Rose Museum and her team well in the years ahead.

Portsmouth Historic Dockyard has been awarded a **2013 Certificate of Excellence** by TripAdvisor for being one of the **top 10% performing businesses in the world** for consistently high ratings – and that was before the new museum opened. So do come and see us all – you'll have a great time!

**Sunny Crouch, OBE**

**Chairman, Portsmouth Historic Dockyard.**







ENTER OWN?  
...had some fine  
...of the con  
...and the





# Fundraising

## New fundraising targets

The £35 million appeal for the new museum was finally completed in January 2013. Donations came from far and wide, from individuals, trusts, foundations, companies and, of course, the Heritage Lottery Fund and Hampshire County Council. Given the wide variety of people and organizations that have supported us it seemed fitting to close the appeal with support from a large number of people, and we did this by running an innovative 'crowdfunding' appeal where many people made donations online. It is a measure of the support we have enjoyed that we secured the final £35,000 of our target in just a week. Our heartfelt thanks go out to everyone who supported the Appeal.

Work has now started in securing regular income to support the many initiatives run by the Mary Rose Trust, not least the education and outreach programme as well as the on-going conservation for many more artefacts. We hope that our Friends and Patrons schemes will expand to provide a regular source of income, with charitable trusts, foundations and companies continuing to support specific initiatives.

We have also set up a Permanent Endowment Fund with the aim of raising £5 million to secure the long-term future of the Mary Rose and her many artefacts. We are delighted to have been awarded a £1 million grant from the HLF/DCMS Catalyst Fund and are now working hard to secure the £1 million match funding needed to unlock this grant. It is hoped that the tremendous contribution made by the Flag Officers of the Mary Rose to the appeal for the new museum will continue in support of the permanent endowment. We are also launching a new legacy campaign to generate funds to ensure that the Mary Rose has the financial security for future generations to enjoy.



# The companies and organizations that have made our museum possible

## A massive thank you to everyone who has helped over the years.

We have listed nearly 400 companies and organisations, large and small, that have helped us get to the point of opening our doors on 31st May 2013. Their support, hard work and teamwork have produced a wonderful museum and a fitting commemoration of those who lost their lives on 19th July 1545. They have not only produced a stunning building but also an exhibition that successfully meets the aspirations of those whose endeavour found, raised and conserved the Mary Rose.

• 2CL  
Communications Ltd  
• 3D Personnel Ltd  
Ltd • A & M Insulations Ltd  
Hadley Ltd • ABA Surveying Ltd  
Hannam-Smith • AC Climate Control Ltd  
• Adam Cooke Refrigeration/Air Conditioning  
• Adept Scientific PLC • Advanced  
Structural Monitoring Ltd  
• Airedale International Air  
Conditioning Ltd  
• Alliance UK Cleaning  
Services • Allied Office  
Machines Ltd  
• Ambassador  
Antalis Packaging  
• AMP Fab Ltd  
• Ampersand  
• Amwell Systems  
Ltd • ANDARK  
• Andrew Reid &  
Partners • Anvil Art  
• AquAid South  
Coast • Arcadia  
Facades Ltd • Architen  
Landrell • Arco Ltd  
• Aries Embroidery Ltd  
• Arnold Brickwork Ltd  
• Artem Ltd • Asher Design  
• Ashmolean Museum • Assa Abloy Ltd • AVIVA  
• Avon Cranes & Commercial Repairs  
• Avanguard Ltd • Axminster Tool Centre  
• B&Q (Portsmouth) • Babcock Marine Ltd  
• BAE Systems • Baker Dougan Ltd • BCL Timber  
Projects Ltd • Beaver Tool Hire (Chichester) Ltd • Benbow  
Group Ltd • Bentham Ltd • Besam  
Ltd • Bibliotheque  
National de France • Bickerstaffe  
• Bildagentur Fur Kunst • Biopharma  
• Bishop Carpentry • Blake Laphorn  
• Bohle Ltd • Boon Edam Ltd  
• Bouygues UK • Bowles Green Ltd  
• Brenntag UK Limited • British Library  
Projects Ltd • BSRIA Ltd • Build It UK  
University • Camlins • Cardiff Commissioning  
Accessible Environments • Chamberlain  
College • Christopher Douglass • Chubb  
• Civica Services Ltd • CLC Contractors  
• Cole Carpentry • Colin McKewan MA  
• Conservation by Design Ltd  
• Conservation Technologies  
• Copyrite  
Trust • Cromwell Group (Holdings) Ltd • Crossman Crafts  
• Crown Fine Arts • CSC Structural Engineering Ltd • Cyber Ware Ltd  
• Cybertill • Dan Pascoe • DATIM Supplies • Davis Langdon • Days Buildbase  
• Demolition & Salvage • Denver Art Museum • DHA Design • Diamond Light Source • Dipest Pest Control Ltd • Direct Personal Cleaning  
• Diving & Inspection Services (Mr Kester Keighley) • Doors & Hardware Ltd • Duggie the Wood • DP Cleaning • Dr Dominic Fontana • Dr Eric Kentley  
• Dr Ian Friel MA, PhD, FSA • Draeger Safety UK Ltd • Dragonfly Creative Solutions • Dyno • Eaton-Williams Group Ltd • ECE Architecture • Edwards Ltd  
• EIC Ltd • Elektron Technology UK Ltd • Elliott Hire (Southampton) • EnergoRetea • Envirochem Analytical Laboratories Ltd • ESA McIntosh • F Parr Ltd  
• Fastglobe Mastics Ltd • Fernando Lai Couto • Fiesta Furniture Ltd • Fiona Baxterb • Fisher Scientific UK Ltd • Foresight Project Support • Foss Paving Ltd  
• Fratton Bridge Garage • Frozen in Time Ltd • FSR Maintenance Ltd • FST Services Ltd • G&L Bullock Ltd • G. Lashley General Haulage Ltd  
• Gable (UK) Ltd • Gemini Data Loggers (UK) Ltd • Geotechnical Engineering Ltd • Germanisches National Museum  
• Getty Images • Grosevenor Fabrications Ltd • Gunnar UK • GVA Second  
Wall • Hampshire County Council • Hanwell Instruments Ltd  
• Harvey Williams Projects • Haynes Manuals • High  
• Hindleys Ltd • Hoistway Ltd  
• Holmes and Quinn Ltd  
• Honeywell  
Pressure Hire  
Business Solutions • Cowdray Heritage  
• Conservation Technologies  
• Copyrite  
Trust • Cromwell Group (Holdings) Ltd • Crossman Crafts  
• Crown Fine Arts • CSC Structural Engineering Ltd • Cyber Ware Ltd  
• Cybertill • Dan Pascoe • DATIM Supplies • Davis Langdon • Days Buildbase  
• Demolition & Salvage • Denver Art Museum • DHA Design • Diamond Light Source • Dipest Pest Control Ltd • Direct Personal Cleaning  
• Diving & Inspection Services (Mr Kester Keighley) • Doors & Hardware Ltd • Duggie the Wood • DP Cleaning • Dr Dominic Fontana • Dr Eric Kentley  
• Dr Ian Friel MA, PhD, FSA • Draeger Safety UK Ltd • Dragonfly Creative Solutions • Dyno • Eaton-Williams Group Ltd • ECE Architecture • Edwards Ltd  
• EIC Ltd • Elektron Technology UK Ltd • Elliott Hire (Southampton) • EnergoRetea • Envirochem Analytical Laboratories Ltd • ESA McIntosh • F Parr Ltd  
• Fastglobe Mastics Ltd • Fernando Lai Couto • Fiesta Furniture Ltd • Fiona Baxterb • Fisher Scientific UK Ltd • Foresight Project Support • Foss Paving Ltd  
• Fratton Bridge Garage • Frozen in Time Ltd • FSR Maintenance Ltd • FST Services Ltd • G&L Bullock Ltd • G. Lashley General Haulage Ltd  
• Gable (UK) Ltd • Gemini Data Loggers (UK) Ltd • Geotechnical Engineering Ltd • Germanisches National Museum  
• Getty Images • Grosevenor Fabrications Ltd • Gunnar UK • GVA Second  
Wall • Hampshire County Council • Hanwell Instruments Ltd  
• Harvey Williams Projects • Haynes Manuals • High  
• Hindleys Ltd • Hoistway Ltd  
• Holmes and Quinn Ltd  
• Honeywell

### Founding Flag Officer HRH The Prince of Wales

#### Admirals

Mr Michael Aiken MBE  
Sir David Cooksey GBE  
Mr Michael Donovan  
Mr Alexandre Gaydamak  
Lord Iliffe DL  
Mr Mark Loveday  
Mr Alan Lovell DL  
Mr Rich Ricci  
Mr Clive Richards OBE DL  
Mr John Robinson  
Dr Chris Sansom  
Lady Stevenson DL  
Mr Daniel K Thorne

#### Vice Admirals

Mr Thomas Bachmann  
Mr Len Blavatnik  
Mr Edmund Byers  
Mr Michael Campbell MBE DL  
The Hon Charles Harris  
Mr Peter Mallinson  
Mr Nigel McNair Scott  
Mr Richard Morse  
Mr Michael Slade

#### Rear Admirals

Mr Richard Atterbury  
Mr Julian Cazalet  
Mr Simon de Zoete  
Mr Roger Eaton  
Lord Fink

Mr Jonathan Gestetner  
Mr Derek Hathaway OBE  
Mr Geoff Hunt PPRSMA  
Mr James Lupton CBE  
Mr Peter Wilson

#### Commodores

Mr Lionel Allery  
Mr Peter Andreae DL  
Mr Michael Ashley  
Mrs Samantha Axtell DL  
Mrs Carolyn Balfour  
Mr David Barnett  
Mr Mike Blinco  
Mr Thomas Bolt  
Commander Tim Boycott OBE RN  
Lord Brabourne

Mr Chris Brandon  
Mr John Brookes OBE  
Mr Keith Brown  
Mr Andrew Brownsword  
Mrs Jennifer Brzozowska  
Mr Michael Bunn  
Mr John Butler  
Mr Iain Chalmers  
Mr Ian Cheshire  
Lady Clarendon DL  
Commodore Jonathan Cooke OBE RN  
Sir David Davies DL  
Mr Michael Deeny  
Mr Peter Dobbs  
Dame Amelia Fawcett DBE  
Mr Colin Field  
Ms Jennifer Green



• Howden  
 Electro Heating  
 • Hudson Claypotter  
 • Hugo Blamey  
 • Hyphose Ltd • Ian R. Herdman • Ideal  
 Interiors Southern Ltd  
 • IDG Design Ltd • IDN  
 Supplies Ltd • IKEA  
 • Imperial College  
 • Industrial (Boiler & Contract) Services  
 Ltd • INEOS Europe  
 AG • Initial Washroom  
 Solutions • International  
 Institute for Conservation  
 • Interpro Technology  
 Solutions • Irving & Company Brewers • ISIS  
 • Isle of Wight Council • ISS Facility Services • ITT Water  
 & Wastewater UK Ltd • Jack Sayers Products Ltd • Jackson  
 Technical Solutions Ltd • Jasun Envirocare PLC • JEOL (UK) Ltd • Johanna  
 Sandstrom • John Hudson • John Ryder Training Centre • John Waller  
 • Jungheinrich UK Ltd • K&T Ltd • Kelda Water Services • Key Industrial • Koninklijke  
 Bibliotheek • Köttermann Ltd • Kungkika Bibliothek • Land Design Studio Ltd • Line  
 Management Group Ltd • Lloyds TSB Bank PLC • Lobster Pictures Ltd • London  
 School of Pharmacy • LSC Facades Ltd • Lukas-Art • Lutz (UK) Ltd • Lyreco UK Ltd  
 • M G J Aboe • Macfarlane Packaging UK Ltd • Machine Mart Ltd • Macods Paving  
 Contractors • Magic Man • Mariner Sails • Markline Construction Ltd • Marsh Plant  
 Hire Ltd • Mercury Graphics Ltd • Met Surveys Ltd • Ministry of Defence • Misco UK  
 Ltd • MMD Roofing & Cladding Ltd • Mode Lighting (UK) Ltd • Mono Pumps Ltd  
 • Moorepay Ltd • Motivation 81 Ltd • MTB Environmental Ltd • Museum & Gallery  
 Lighting Ltd • National Maritime Museum • National Trust Photo Library • Nationwide  
 Services • Naval Historical Branch • New Air (Southern) Ltd • North Carolina Museum  
 of Art • North Valley Metal Co (Colne) Ltd • Novatech Ltd • Novatron Scientific Ltd  
 • O'Neill & Brennan Group • Onestop Key Rings • Onsite Services • Opus Magnum • Oscar  
 Nilsson • Ove Arup & Partners Ltd • Oxford Exhibition Services • Pace Roofing Ltd  
 • Paddy & Scott's • Paints 4 U • Pall Europe Ltd • PAR Louvre Systems • Paragon Creative  
 • PC Flooring Ltd • Pelloby Ltd • Pepys Library • Peter Darcy Industrial Training Services  
 • Phase Technology Ltd • Philips Lighting • Pixave • Planet Ocean Ltd • Pompey Scaffolding  
 • Portakabin (Southampton) • Portchester Spinners • Portsmouth City Council • Portsmouth  
 Grammar School • Portsmouth Historic Dockyard • Portsmouth Naval Base Property Trust  
 • Portsmouth University Library • Power Technique Ltd • Powerplex Computer Solutions Ltd  
 • Pre-Construct Archaeology Ltd • Premier Recruitment Solutions • Premier Telecom Solutions Ltd  
 • Preservation Equipment Ltd • Prestige Refinishing UK • Pringle Brandon Perkins + Will • Pro-Media  
 • Progression Signage • Protectis Ltd • Protective Surface Coatings • Pugh Computers Ltd • Rackline  
 Ltd • Ramboll UK Ltd • Ramfoam Ltd • Ramplas Ltd • RBS Scaffolding Ltd • Ree Engineering Ltd  
 • Reginald Woodworking Ltd • Reier Showcases Ltd • RFI Insulation Services Ltd • Richard Glassborow  
 • Richard Rogers Conservation Ltd • Robin Wood • Roger Harris • Rowecord Engineering Ltd • Royal Academy  
 of Art • Royal Armouries Library • Royal Collection Enterprises Ltd • Royal Maritime Club • Russell Photo  
 Imaging • S&J Building Services UK Ltd • Safeguard Water Technologies • Safelab Systems Ltd • Salesforce • Sandy  
 Brown Associates • SB Electronic Systems Limited • Scena Projects Ltd • Screwfix (Portsmouth) • Senate Electrical  
 • SES Controls Ltd • Shadlock Associates Ltd • Shakespeare Birthplace Trust • Sheffield Insulations Ltd • Shell UK Ltd  
 • Sigma-Aldrich • Simplicity Mouldings & Interiors Ltd • Smiths Metal Centres Ltd • Society of Antiquities • Softcat Ltd • Solar Laser  
 Systems Ltd • Sorbus International Ltd • Southampton Museum Service • Southampton Solent University • Southern Belfing Ltd • Southern  
 Co-operatives Ltd • Southern Industrial Roofing Ltd • Southern Self Drive (Fareham) • Speedy Asset Services Ltd • Spiral Productions Ltd  
 • Spinax Sarco UK • SR Commissioning Services Ltd • St John's College • Stadtbibliothek Nurnberg • Stannah Microlifts Ltd • Stephen Browning  
 Associates • Stephen Foote • Stone Consulting Engineers Ltd • Straightpoint UK Ltd • Structural Steel Craft Ltd • Studwelders Composite Floor Decks  
 Ltd • Superstock • Surewall Ltd • Sutton Winslow Ltd • SX Environmental Supplies Ltd • Sysco • T Colborn & Son Ltd • T S Booker & Son • TAAB  
 Laboratories Equipment Ltd • Taylor & Francis Group • TDA • Team Flitwick • Techfire Ltd • The Art Gallery of Ontario • The Artful Bodger • The Audience  
 Agency • The Bridgeman Art Library Ltd • The BSS Group Ltd • The College of Arms • The Consortium • The Crown Estate • The Huntington Library • The  
 IMC Group • The McKee Family • The Royal Armouries • The Royal Collection • The Royal College of Surgeons • The Royal Navy • The Stewart Company  
 • The Wellcome Trust • Thermal Exchange Ltd • TM Clothing PLC • TNT International • Toby Jones • Tods Workshops Ltd • Traddebe Ltd • Tsunami Axis  
 Ltd • TTS Group Ltd • Twigfolly UK Hydrographic Office • UniGuard Fire Protection Ltd • Univair Ltd • University of Glasgow • University of Kent  
 • University of Portsmouth • University of Surrey Library • Vasa Museet • Victoria Fox Retail Consultancy • Viking • Viridor • Vodaphone  
 • Warnings Contractors Ltd • Warsash Maritime Academy • Weishaup (UK) Ltd • Weiss Gallenkamp Ltd • Wellcome Images  
 • Wessex Fabrications Ltd • WF Electrical • WF Senate • Wilkinson Eyre Architects • Wilo (UK) Ltd • Worshipful  
 Company of Barbers of London • Xylem Water Solutions Ltd

Mr Matthew Grinnell  
 Mr Adam Humphryes  
 Mr Andrew Joy  
 Mr Terry Kerr  
 Mr David Kowitz  
 Mr Ian Laing  
 Mr Michael Langdon  
 Mr Robert Legget  
 Rear Admiral John Lippiett CB MBE  
 Miss Emma Lovell  
 Miss Lucinda Lovell  
 Viscount Lymington  
 Mr Neil McGrigor  
 Mr Michael Meacock  
 Dr Dudley Moore  
 Mr Colin Murray  
 Mr Finian O'Sullivan

Mr Tim Oliver  
 Mr David Palmer CBE  
 Mr Robert Pooley  
 The Countess of Portsmouth  
 The Earl of Portsmouth DL  
 Dr David Price CBE  
 Miss Caroline Purse  
 Mr Nigel Purse  
 Mrs Stella Reeves  
 Mr Russell S Reynolds Jr  
 Lady Rivett-Carnac  
 Mr Keith Roberts  
 Mr James Roe  
 Mr Alex Roe  
 Mr Ian Ronald  
 Mr Christopher Shaw  
 Mr Andrew Speirs

Mr Nicholas Stanley  
 Mr Alan Stannah  
 Dr Derek Stubbs  
 Mr Tom Sweet-Escott  
 Mrs Penelope Tate  
 Lady Tidbury  
 Mr Hugh Tidbury  
 Mr Robert Tuttle  
 Mrs Sally Tyrrell  
 Mrs Cynthia J Warner  
 Mr Charles Watson  
 Mr Crispin Wright  
 Mrs Anne Wright

**Honorary Patrons**  
 Mr Christopher Andreae  
 Sir David Cooksey GBE

Dr & Mrs David Hartnett  
 Colonel Wendell Lewis  
 Mr & Mrs Bill Moore  
 Dr Margaret Rule CBE

**Life Patrons**  
 Mr Michael Aiken MBE  
 Mr Lionel Allery  
 Lord Ashburton KG KCVO DL  
 Mr James Bangert  
 Sir Michael Bett CBE  
 Mr David Borchard  
 Mr Julian Cazalet  
 Mr David Childs CBE  
 Rear Admiral Roy Clare  
 Mr Tony Combes  
 Mr Michel de Carvalho  
 Mr Damon de Laszlo  
 Mr & Mrs Simon de Zoete  
 Mr Christopher Dobbs  
 Mr Peter Dobbs  
 Mr Derek Drake  
 Mrs Margaret Fisher  
 Mr Jonathan Gestetner  
 Mr Jonathan Gibbs  
 Ms Jennifer Green  
 Mr David Hagan  
 Dr Robert Hardy CBE D Litt  
 Mr Tigger Hoare  
 Mr & Mrs Tim Hopper  
 Mr Robert Lapraik  
 Mr Ken Laws MRICS  
 Mr Geoffrey Leece  
 Rear Admiral John Lippiett CB MBE  
 Mr Mark Loveday  
 Mr Charles Martin  
 Mr Michael Matantos  
 Mr & Mrs Alex McKee  
 Mrs Ilse McKee  
 Mr & Mrs Patrick Molineux  
 Lady Morton  
 Miss Maria Moseley  
 Mr Sandy Muirhead  
 Mr Anthony Palmer  
 Mr Stephen Plunkett  
 Mrs Stella Reeves  
 Mr John Robinson  
 Mr James & Dame Marion Roe DBE  
 Dr Lesley & Mr Ian Runnalls  
 Sir James Scott  
 Mr & Mrs Richard Tassell  
 Mr Hugh Tidbury  
 Mr Derek Tullett CBE Hon DSC  
 Mr Peter Usher CBE FREng  
 Mr Ray Wheeler  
 Mr Richard Willey  
 Mr Derek Williams OBE  
 The Hon Jeremy Wills  
 Miss Anna Woolley

**Patrons**  
 Mr Nicholas Abbott  
 Ms Berit Antonsen-Mortlock  
 Mr & Mrs Anthony Balme  
 Mr Bernard Barnwell  
 Mrs Wendy Bateman  
 Sir Timothy & Lady Bevan  
 Dr John Bevan  
 Mr Patrick Bowman  
 Mrs Heather Bowring  
 Mr Jeff Bryan & Miss Josie Bates  
 Sir Don-John Buckland KHS RN  
 Mrs Brenda Bumstead  
 Mr Adam Burnha  
 Mr & Mrs Ron Button  
 Mr & Mrs Duncan Buyers  
 Mr & Mrs Philip Carter MBE  
 Mr George Coppen  
 Miss Susan Crellin & Miss Jackie  
 Goad  
 Mr Michael Critchley

Mr John Davies  
 Mr & Mrs Robin Dewhurst  
 Dr Anthony Dickens  
 Mr Anthony Dignum  
 Miss Gillian Drake  
 Mr & Mrs Charles Drayson  
 Mr Harry Eatough  
 Mr Peter Ellement  
 Mr & Mrs Brian Elliott  
 Mr Roger England  
 Mr & Mrs Roger Gladdish  
 Vice Admiral Michael Gretton CB  
 Mr & Mrs Hallett  
 Sir David & Lady Hardy  
 Group Captain Peter Harris  
 Mr Richard Harrison  
 Mr & Mrs Peter Henshaw  
 Ms Verina Horsnell & Mr Mike  
 Smith  
 Mr Kevin Howell  
 Mr Derek Hutchison  
 Mrs Joyce Ilett  
 Mr Roger Kearney  
 Mr Dennis Kelly  
 Professor & Mrs Charles Kerr  
 Mrs Katharine Lippiett  
 Mrs Susan Macarthy  
 Mr Ian MacGillivray  
 Mr & Mrs William Marris  
 Mr & Mrs William McNutt  
 Dr & Mrs David Melzack  
 Mr Jeremy Montagu  
 Mr John Morgan  
 Mr & Mrs Paul Murnane  
 Mrs Anne Newton-Palan  
 Lady Nixon  
 Mr David Nye  
 Mr & Mrs Peter Osborne  
 Mr Vic Patterson  
 Mr & Mrs Donald Payne  
 Mr & Mrs Adrian Platt  
 Mr & Mrs Christopher Power  
 Mrs Cheryl Price  
 Mrs Gillian Price  
 Mr John Pringle  
 Mrs Gina Priseman  
 Dr Roger & Dr Rosemary Ryall  
 Mr Dennis Savory  
 Mrs Frances Scott  
 Mr Christopher Shaw  
 Mr Julian Sheffield DL  
 Admiral Sir Jock Slater GCB LVO  
 Mr Geoffrey Smethurst  
 Mr & Mrs Ninian Stewart  
 Mr Ray Sutcliffe  
 Lord & Lady Swinfen MBE  
 Mr Alf Symonds  
 Lady Tidbury  
 Mr Robert Townson  
 Mr John Towse  
 Miss Mary Tyrrell MBE  
 Mr & Mrs John Tyrrell  
 Professor & Mrs Nicholas Vaughan  
 Mr & Mrs Ian Walker  
 Miss Phoebe Walker  
 Mr & Mrs Fred Warner  
 Mr Simon Watson  
 Mr & Mrs Robert Weston  
 Dr Helen Williams  
 Mr Terry Wisdom  
 Eur Ing & Mrs Kevin Wright

**MRIG**  
 Mr Danny Banting  
 Mrs Margaret Braddock  
 Mr David Childs CBE  
 Dr Ken Collins & Ms Jenny  
 Mallinson  
 Lt Bill Davies RN Retd  
 Mr Christopher Dobbs  
 Mr Alan Eade  
 Mr Harry Eatough

Mr Peter Ellement  
 Dr Dominic Fontana  
 Mr Bob Foster  
 Mr Colin Fox  
 Mrs Carol Gillions  
 Mr Albert Granville CBE CLH  
 Mr Steve Griffiths  
 Mr Alan Harvey  
 Lt Cdr Mike Hill RN Retd  
 Mr Eric Huke  
 Mr Peter Lansdown  
 Mr Gordon Massie  
 Mr Alex McKee  
 Mrs Anne Merrett  
 Mr Patrick Molineux  
 Mr & Mrs Bill Moore  
 Mr John Morgan  
 Mrs Dawn Perrier  
 Mr Phil Roberts  
 Dr Lesley Runnalls & Mr Ian Runnalls  
 Mr Martin Sharp  
 Mr Geoffrey Smethurst  
 Mr Ted Sutton  
 Mr & Mrs Alan Turton  
 Mr & Mrs George Wade  
 Mr Maurice Wakeham  
 Mr Ewan Ward-Thomas  
 Rev Dr Brian Williamson

#### Volunteers

Mr Laurie Arnell  
 Mr Stewart Aughey  
 Mr John Bagnall  
 Mrs Jan Bagnall  
 Mr Danny Banting  
 Mrs Janet Blair  
 Mrs Barbara Bones  
 Mrs Peggy Bourne  
 Mrs Diane Budden  
 Mrs Wendy Callear  
 Mrs Judith Carnit  
 Mrs June Carroll  
 Mr Charlie Carroll  
 Mrs Pat Cave  
 Mrs Pat Churchill  
 Mr Neil Clements  
 Miss Charissa Collins  
 Mr Jonathan Collins  
 Mrs Joy Critcher  
 Mr Wil Cullen  
 Mrs Annie Curnow  
 Miss Hannah Davis  
 Mr Roger Dawson  
 Mrs Joy Dunn  
 Mrs Louise Eaton  
 Ms Jan Evans  
 Mr Peter Fear  
 Miss Corrine Firman  
 Mrs Sally Fitzgerald  
 Ms Emma Goodfellow  
 Mrs Jane Harrison  
 Mr Roy Herbert  
 Mr David Hill  
 Mrs Marge Hinton  
 Ms Lynda Holliman  
 Miss Poppy Howland  
 Mrs Ann Hunt  
 Mr Ricky Hussey  
 Mrs Suzanne Hussey  
 Mr Roger Hyson  
 Mr Laurie Johnson  
 Mr Trevor Jones  
 Mrs Maggie Knox  
 Mr Tim Lambert  
 Mrs Rosie MacPherson  
 Mr Harry Mallinder  
 Mrs Wendy Martin  
 Mr Roger Mason (deceased)

Mr Tom McCarthy  
 Miss Bea Mendyk  
 Mrs Marie Mollins  
 Mrs Pam Morn  
 Mrs Hazel Morris  
 Mr Gavin Morrison  
 Mr Andy Page  
 Mrs Cynthia Pagett  
 Mr Aaron Peach  
 Ms Gee Perry  
 Mr Vernon Phipps  
 Mrs Cheryl Price  
 Mrs Gina Priseman  
 Mr Dan Rad  
 Mr Rajesh Raghukumar  
 Miss Sarah Rooke  
 Miss Ailsa Rose  
 Miss Chloe Shipp  
 Mr Michel Sibille  
 Mrs Virginia Steel  
 Mr David Stephenson  
 Miss Heidi Street  
 Mr Colin Summerfield  
 Mr Glen Tibot  
 Mrs Betty Trigg  
 Mrs Eileen Ward  
 Ms Grace Weston  
 Mrs Lynne White  
 Mrs Gloria Wood  
 Mr Peter Wood  
 Mr Mike Wyles  
 Mr Maurice Young

#### Trusts, Foundations & Liveries

Heritage Lottery Fund  
 The Band Trust  
 The John Coates Charitable Trust  
 Coles-Medlock Foundation  
 John Ellerman Foundation  
 Eranda Rothschild  
 The Allan and Nesta Ferguson Charitable Trust  
 Sir John Fisher Foundation  
 The Foyle Foundation  
 J Paul Getty Jr Charitable Trust  
 The Goldsmiths' Company Charity  
 The Peter Harrison Heritage Foundation  
 The Hartnett Conservation Trust  
 The Charles Hayward Charitable Trust  
 The Headley Trust  
 Alexander Hoare Charitable Fund  
 The Hobart Charitable Trust  
 The Hobson Charity  
 The Worshipful Company of Leathersellers  
 Leche Trust  
 Walter Lees Foundation  
 Lloyd's Register Foundation  
 Logie Charitable Trust  
 Stavros Niarchos Foundation  
 Carew Pole Trust  
 The Dr Mortimer and Theresa Sackler Foundation  
 Salesforce Foundation  
 Basil Samuel Foundation  
 The Scorpion Charitable Trust  
 The Bernard Sunley Charitable Trust  
 John Swire 1989 Charitable Trust  
 The Corporation of Trinity House  
 Sir Siegmund Warburg's Voluntary Settlement  
 Wellcome Trust  
 The Welton Foundation  
 Garfield Weston Foundation  
 The Wolfson Foundation

#### Companies and Organisations

American Friends of the Mary Rose  
 Ampersand  
 B&Q plc  
 Barclays  
 Blake Laphorn  
 Bouygues UK  
 Chemring Group  
 Curzon Partnership  
 CWO  
 Danebury Wine  
 Davis Langdon  
 DHL International  
 Diamond Light Source Ltd  
 Diverse Productions (Colin Fox)  
 Greenhill & Co International LLP  
 Hampshire County Council  
 INEOS  
 Instron  
 JEOL UK Ltd  
 Jungheinrich Ltd  
 Kingfisher Plc  
 LV=  
 Macmillan Publishers Ltd  
 Mary Rose Society  
 Medieval Society  
 Motivation  
 Nauticalia  
 Oxford Instruments  
 Pooley Swords Ltd  
 Portakabin  
 Portsmouth Lord Mayor Appeal  
 Portsmouth Naval Base Property Trust  
 Portsmouth University Student Union  
 Reef Publications  
 The Royal Mint  
 The Royal Lymington Yacht Club  
 Sainsbury's Portsmouth  
 Sarasin & Partners  
 Screwfix Ltd  
 Serco Marine Services  
 Southern Cooperative  
 Southern Water  
 Southsea Sub Aqua Club  
 TM Clothing  
 Waitrose Southsea Community Matters  
 Wightlink Ltd

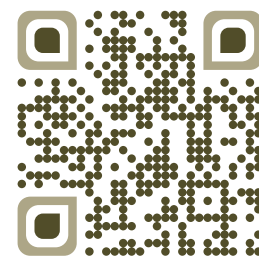
#### With Grateful Thanks

The Second Sea Lord and Commander in Chief Naval Home Command  
 Action Stations  
 BAE  
 BBC National  
 BBC South Today  
 Dr Des Barker  
 Mrs Joan Bergin

Rev David Brindley  
 Miss Charlotte Chamberlain  
 Dr Margaret Clegg  
 Mr Fernando Lai Couto  
 Mr Mick Csaky  
 David Austin Roses  
 Dr Paul Garside (British Library)  
 Mr Adam Grater  
 Hampton Court Palace  
 Mr Stephen Hearn  
 Mr Michael Hirst  
 Historic Royal Palaces  
 HMS Duncan - Ship's Company  
 HMS Victory  
 HMS Warrior 1860  
 Mr Ross Hopcraft  
 Mr John Howard  
 Mr Mark Insoll  
 Mrs Helen Jones  
 Ms Maev Kennedy  
 Dr Eric Kentley  
 Mrs Claire Looney  
 Ministry of Defence  
 National Museum of the Royal Navy  
 Naval Base Commander, Portsmouth  
 Mr Richard Neave  
 Mr John Onslow  
 Mr Sebastian Payne  
 The Earl and Countess of Portsmouth  
 Portsmouth City Council  
 Portsmouth Festivities  
 Portsmouth Grammar School  
 Portsmouth Historic Dockyard  
 Portsmouth Naval Base - Health Safety and Environment Group  
 Portsmouth Naval Base Property Trust  
 The Portsmouth News  
 Mr Stephen Riley  
 The Royal Collections  
 Mr Stephen Shaw  
 Shirley Farmer Associates  
 Mr Dan Snow  
 Southampton Solent University  
 Southsea Castle  
 TDA Ltd  
 Ms Sandi Toksvig  
 Dr Dominic Tweddle  
 University of Cambridge  
 University of Portsmouth  
 University of Southampton  
 University of Warwick  
 Mr Stuart Vine  
 Dr Keith Watson  
 Dr Philip Wise  
 Dr Tony Woods  
 Mr Simon Wood  
 Ms Sue Wright

## Mary Rose roll of honour

From 1979 to the present day, more than 5,000 individuals or organisations have been involved with the Mary Rose Trust. Search for a name by scanning the **QR code** on your smart phone or from the website  
[www.mrrollofhonour.co.uk](http://www.mrrollofhonour.co.uk)

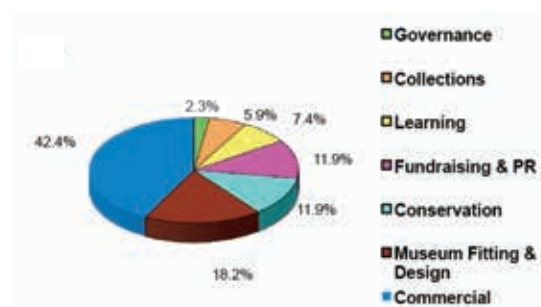
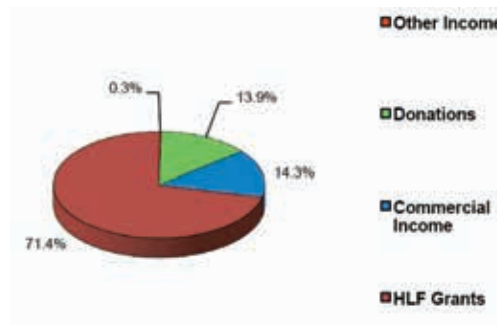




# Financial summary

## Statement of financial activities for the year ended 31st December 2012.

Income & Expenditure	Total 2012 £	Total 2011 £
<b>Incoming Resources</b>		
Visitor related	76,569	91,885
Commercial Trading Income	943,792	1,016,234
Grants receivable	5,076,112	9,742,296
Donations	991,617	287,587
Invested Income	20,389	51,095
Miscellaneous	2,283	2,960
<b>Total Incoming Resources</b>	<b>7,110,762</b>	<b>11,192,057</b>
<b>Charitable Activities Expenditure</b>		
Commercial Trading	959,355	890,556
Learning	167,672	181,575
Conservation	270,415	861,721
Collections	133,605	117,361
Publications	0	31,113
Museum Fitting & Design	411,094	314,205
	1,942,141	2,396,531
<b>Other expenditure</b>		
Fundraising and public relations	268,362	324,196
Governance Costs	53,001	52,129
	321,363	376,325
<b>Total Resources Expended</b>	<b>2,263,504</b>	<b>2,772,856</b>
<b>Net incoming/(outgoing) resources</b>	<b>4,847,258</b>	<b>8,419,201</b>
<b>Total funds brought forward</b>	<b>27,139,157</b>	<b>18,719,956</b>
<b>Total funds carried forward</b>	<b>31,986,415</b>	<b>27,139,157</b>



### NOTE

1. The fundraising drive which commenced in 2007 was closed in March 2013 having raised £13.1 million, of which £0.9 million is pledged at March 2013 to be paid over the next 3 years.
2. The accounts have been compiled in accordance with the latest SORP
3. The Grants receivable from the Heritage Lottery Fund are significantly lower than the prior year as building the new museum was largely completed during 2012.
4. The capital expenditure of £7.09 million during 2012 is additional to the figures shown on the Statement of Financial Activities above.
5. The conservation costs are declining as the final phase will be incorporated with the capital costs of the new museum.

These summarised accounts are extracted from the Trustees' report and Financial Statements for year ended December 2012, which received an unqualified auditor's report. They were approved on 28 June 2013 and submitted to the Charity Commissioners and Registrar of Companies. These summarised accounts may not contain sufficient information to allow for a full understanding of the financial affairs of the charity.

A complete set of the report and accounts are available from The Mary Rose Trust on request.

Michael Aiken MBE  
Chairman







# Trustees & directors

Trustees and directors as of 31st December 2012:-

## President

HRH The Prince of Wales

## Vice Presidents

The Lord Lieutenant of Hampshire (ex-officio)

The Lord Mayor of Portsmouth (ex-officio)

The Lord Brabourne

Admiral Sir Kenneth Eaton, GBE, KCB

## Chairman of Trustees

Michael Aiken MBE

## Chief Executive

Rear Admiral John Lippiett, CB, MBE

## Trustee Directors

John Brookes OBE – Vice Chairman

Caroline Dudley OBE

Alan Lovell DL

Dr Janet Owen

John Robinson

Professor Sir Barry Cunliffe KB CBE

Rupert Grey

John Macmillan FCA

David Palmer CBE

Dr David Starkey CBE

## Members

Lionel Allery

Christopher Brandon

Mrs Emily Cherrington

Ian Dahl

Sir David Hardy

Cllr Terry Henderson

The Rt Hon Lord Iliffe

Martin Jay CBE DL

Russell Reynolds Jr

Mrs Coral Samuel CBE

Fred Warner

Cllr David Butler

Cllr Chris Carter

Ian Cheshire

Dame Amelia Fawcett

Dr Robert Hardy CBE

Dr Michael Houghton

Paul Jackson

Christopher Moran

Robert Robson

Daniel Thorne

## Legal and Administrative Information

Company Registration Number:

1415654 Charity Number: 277503

## Registered Office, and principal place of business

1/10 College Road, HM Naval Base, Portsmouth

Hampshire, PO1 3LX

## Chairman of the Appeal Committee

Alan Lovell DL

## Company Secretary

William Jackson, FCMA

## Insurance Brokers

Sutton Winson Ltd

Town Hall Chambers, Heath Road,

Petersfield, Hampshire GU31 4TF

## Bankers

Lloyds TSB Bank plc

Commercial Banking Service Centre, 23/35

Castle Way, Southampton, Hampshire SO14 2BW

## Solicitors

Blake Laphorn Tarlo Lyons

New Kings Court, Tollgate, Chandlers Ford,

Eastleigh, Hampshire SO53 3LG

## Auditors

Compass Accountants Ltd.

Venture House, The Tanneries, East Street,

Titchfield, Hampshire PO14 4AR



MARY ROSE TRUST

## Annual Review 2013

Mary Rose Trust College Road, HM Naval Base, Portsmouth, Hampshire, P01 3LX  
mail@maryrose.org www.maryrose.org www.facebook.com/MaryRoseMuseum

Registered No. 1415654 England Registered Charity No. 277503 Give as you earn No. 007352 US 501 (c) (3) certification



Supported by  
**The National Lottery**<sup>®</sup>  
through the Heritage Lottery Fund

