

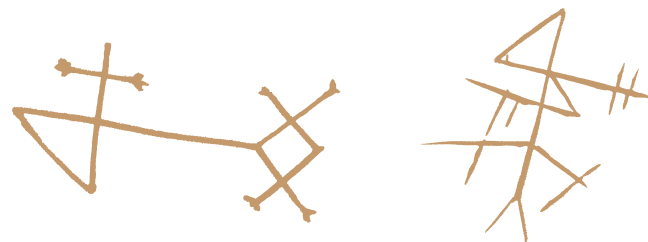
MARY ROSE TRUST

# ANNUAL REVIEW 2010

THE HARDWORKING CREW



# 2010 - A REVIEW



## Prince Harry marks the next milestone in the history of the Mary Rose

Prince Harry has visited the Mary Rose Trust, Portsmouth Historic Dockyard to mark the next milestone in the history of the Mary Rose. The Prince was given a tour of the current museum and its collection before taking part in the foundation stone ceremony for the new Mary Rose museum.



## The Mary Rose sailed into space with the final Endeavour Mission

In May this year the space shuttle Endeavour named after Capt James Cook's famous vessel launched for the last time on a mission to the International Space Station. On board was an original truck ball from the Mary Rose rigging. The Mary Rose was as revolutionary in technological advances 500 years ago as the Space Shuttle was in the early 1980s. Both have helped pioneer exploration and advance the sciences.



## Maritime great Mary Rose, immortalised on UK £2 coin

The Royal Mint is commemorating the 500th anniversary of the Mary Rose's launch in Portsmouth in 1511 by issuing a £2 coin depicting the ship, part of King Henry VIII's Tudor battle fleet.

This limited edition £2 coin will enter circulation this year, finding its way into the nation's change up and down the country.



## Mapping Portsmouth's Tudor past

The Mary Rose Museum hosted a special exhibition in 2010, which brought together for the first time a unique collection of 16th Century maps and charts. These documents tell us a great deal about the state of the nation's defences during Henry VIII's reign. The exhibition included the earliest scale map of an English town, Portsmouth in 1545.



CLARENCE HOUSE

Over the past year, the Mary Rose Trust has been earnestly celebrating the 500th anniversary of the laying down of the *Mary Rose* and I have no doubt it will continue to mark similar anniversaries right up to 2045, when her sinking will be remembered. In spite of this tragic event, watched by King Henry VIII, we are now in possession of the ship's hull and contents to study and enjoy together, giving us the finest insight into life during Tudor times.

The Mary Rose Trust, of which I am proud to have been President for the last 35 years, has always held the dream of building a museum to house this unique collection. I am delighted by the progress made over this last year and to hear that the ambitious plans to complete the museum and the ship's conservation work are coming to fruition. The fundraising task for this small charity is enormous and the weight on it to bear the costs to preserve and exhibit these treasures is very considerable indeed. Yet, with the significant help of the Heritage Lottery Fund and a large number of trusts, companies and individuals, to whom I am enormously grateful, the Trust has achieved 90% of the funding required. This is no mean feat in this difficult economic climate, although there remains a distance to go on the voyage to complete this remarkable project.

The Mary Rose Trust also continues apace with its innovative and highly successful Learning and Outreach programme. The stories associated with the *Mary Rose* and her artefacts have an appeal to all ages and all abilities – indeed, the outreach programme to those with special needs is nationally acclaimed as an example of best practice. That this 500-year old collection can inspire so much interest across a range of subjects shows the real benefit of our great national heritage. I understand the word used most frequently in the feedback from these visits is 'inspirational', and 'inspirational', I feel, sums up the entire *Mary Rose* project.

I would like to wish the *Mary Rose* and her modern-day ship's company continued good fortune as the momentum builds towards the opening of the new museum in 2012.



# CHAIRMAN & CHIEF EXECUTIVE FOREWORD

There is always something new and exciting to be found within the Mary Rose project, and this year is proving as exhilarating as any before it.

The Trust's major work has been in progressing the building of a new museum and the continuation of the conservation programme. The £35m project, which would daunt most national museums, ensures that the small team at the Trust, aided by an outstanding group of professional partners, has been working flat out with the builders to keep the project on time and cost. It was a particular honour to have His Royal Highness Prince Harry come to lay our Foundation Stone in March. As the building takes up its distinguished shape, the exhibition plans are well advanced and will be implemented over a 6 month period next year.

Meanwhile the current museum and shop continues to provide much satisfaction, and the Learning and Outreach programme expands to reach yet more of the young and old. Our reputation for working with those with special needs of all natures is growing year by year; we pride ourselves on the ground-breaking results achieved. The Mary Rose really is for everyone.

Our research continues apace, on the scientific, maritime, and historical aspects. 2011 sees the culmination of the Mary Rose Publication programme, with the magnificent "Weapons of Warre" volumes just published. The ship's 500th anniversary has been noted in a number of ways: most spectacularly by the space shuttle Endeavour taking a parcel ball from the Mary Rose into space this summer, to celebrate mankind's 500 years of voyaging, but also by the Royal Mint striking a handsome £2 coin of the Mary Rose, which goes into circulation towards the end of 2011. Our Fundraising Campaign will then plead that when these coins are found in your change, please send one back to us at PO1 3LX! It is pleasing to note that we have achieved 93% of our appeal target, but it remains worrying that we have just over £2.5 million still to raise at this difficult time.

While we await the opening of the new museum next autumn, this review concentrates on the work of the staff and volunteers that do so much great work to make all this progress possible. We thank them, and all the many supporters of this great enterprise.



Michael Aiken  
CHAIRMAN



John Lippiett  
CHIEF EXECUTIVE



# PORTSMOUTH HISTORIC DOCKYARD

Visitor satisfaction with the whole site remains high and the temporary withdrawal of the Mary Rose ship hall has been handled very well by all our visitor services.

We continue to get excellent feedback via social media sites like Tripadvisor and over 90% of our visitors consider the site ticket to be good or very good value for money. We were also delighted to be awarded the Visit England VAQAS accreditation, with a very complimentary report.

The new Mary Rose Museum and the National Museum of the Royal Navy's 20th Century Galleries, opening between 2012 and 2014, will provide us with a considerable boost which must be maximized and all the Historic Dockyard members are working very hard developing an exciting and innovative plan for our long term future.

This plan, enhanced by Mary Rose's significant contribution, makes for a very bright future!

Dr Caroline Williams, Chairman of Portsmouth Historic Dockyard Ltd.



# A NEW IDENTITY FOR THE MARY ROSE

“With the forthcoming launch of our new museum, it was decided to review the brand identity of the Mary Rose to better bring to life its appeal to a broader audience.”

Extensive consultation revealed that the existing logo told only part of our story and that showing a ship could even build false expectations of what the visitor would find.

The story of the Mary Rose is dynamic and continuing. It is a tale that starts with tragedy but the new museum will reflect the essential truth that ‘when their world ended, our story began’.

The new logo, developed by Scott Sherrard of the Cambridge Centre and Edinburgh Design Agency, Studio LR, captures that dynamic. Its impact has been immediate, already winning a Scottish Design Award and becoming the only UK logo to earn a place in the prestigious Design & Art Directors Annual.



Primary colours



Secondary colours



## The Hardworking Crew PROJECT TEAM

“As the new Mary Rose Museum project enters its third year, construction of the building is now well underway.”

To co-ordinate a project of this size is an ambitious and challenging task, but it's also very exciting! There is a wonderful enthusiasm for the project and a tangible feeling of anticipation as the construction plans become a reality. There is great commitment from everyone involved as we come to realise a special and remarkable building. We are proud that our work will be appreciated by present and future generations.

As Deputy Chief Executive, Robert Lapraik manages the day to day operation of the Trust and has responsibility for coordinating the new museum project. Robert enjoyed a flying career in the RAF followed by 20 years in acute NHS hospital management before joining the Mary Rose Trust in 2006.

Brian Robinson provides project liaison between the Trust, Warings Construction Limited, the Naval Base and Defence Estates personnel. In addition, his previous experience as a former MoD Director, with Naval Base, design, new construction and facility management experience enables him to oversee progress on site, on behalf of the Trust.

Michelle Rickman joined the project in March 2008, just after the Trust was awarded the grant by the Heritage Lottery Fund. She is the Project Administrator and assists all the project teams including the architects, engineers, designers and cost consultants. Michelle also works with stakeholders in Portsmouth Naval Base.

Alastair Miles joined the Mary Rose Trust in September 2009 as the Project Assistant. He provides administrative support to those working on the New Museum - principally the Project Team and the Exhibition Team. Alastair is also a student at the University of Leicester, taking an MA in Museum Studies.



Brian Robinson, Robert Lapraik, Michelle Rickman & Alastair Miles





The Hardworking Crew

## DISPLAY & DESIGN TEAM

“The new museum will have displays featuring thousands of the Mary Rose’s artefacts that have never been seen before. Our team has the enormous – but exciting – challenge of preparing these objects and content for display.”



Rose Smith produces models of all the cases and arranges the layout to make sure the artefacts look as beautiful as possible. She also leads the mountmaking team (Dennis Cook, Adam Mason and Katie Harvey) who are responsible for making supports for all the objects, and acrylic ‘infills’ to show where parts of the objects have decayed away completely. Peter Crossman works with the team taking photographs of all the objects and working on the essential documentation.

Christopher Dobbs, Alex Hildred and Andy Elkerton are our experts on the Mary Rose artefacts, archaeology and history. They are busy selecting which objects to include, writing the labels and working with the graphic and audio-visual designers to produce exciting and informative displays for the new museum.

Nick Butterley (Exhibition Co-ordinator) joined the Trust in May 2010, having previously worked on the £57 million redevelopment of the Ashmolean. His job is to plan the exhibition works, and try to make sure everything happens on time as well as keeping a close eye on the budget.





## The Hardworking Crew FINDING THE MONEY

“In 2008 the Heritage Lottery Fund made an award of £21million towards the costs of restoring the Mary Rose and creating the new museum that will house her.”



Sarah Slocombe and Jacky Wilson

Our task is to raise a further £15million in match funding. Since then the fundraising team of Sue Collis, Lucy Hone and Fiona Harvey, led by Peter Taylor, has secured £12million; an amazing achievement, working in a very difficult economic environment.

They have been supported throughout by a hugely dedicated team of volunteers to whom we are very grateful.

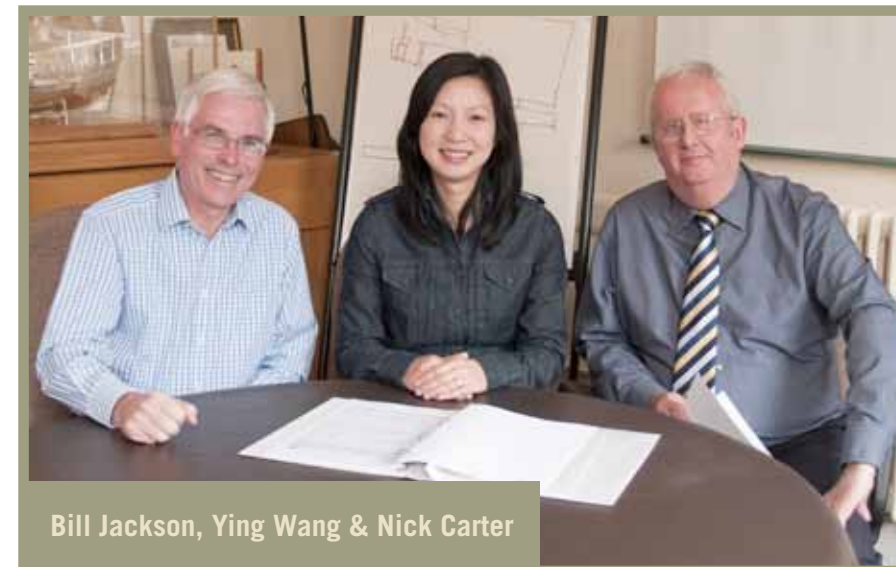
Donations have been received from a variety of sources-see page 20: charitable trusts and foundations, companies, statutory bodies and many, many generous individuals, all of whom have been inspired by the story of the Mary Rose.

Peter Taylor has now moved on and the final phase of the appeal will be led by Sarah Slocombe and Jacky Wilson. Our target is to raise the final £3million and complete the appeal by the end of 2012.



## The Hardworking Crew PAYING THE BILLS

“But that is only half the story. Managing the cash flow so that funds are available to meet all the stage payments and keep the Mary Rose Trust running at the same time has required the finance group to embrace new disciplines and apply more rigorous controls.”



Bill Jackson, Ying Wang & Nick Carter

Although £12million has been raised, we have already spent £5million of our funds on our share of architect's and engineer's fees for the design of the museum, the preparation of the site and construction so far. £3 million of this £12million is pledged for future payment and is not yet in the bank.

This means that £4million is presently available for our share of the costs to complete the building, with the balance coming from the HLF.

We monitor on a monthly basis the funds available, which presently would be insufficient to fit out the new museum. Close liaison is required with the project managers to account for the building costs incurred. We also manage on a weekly basis the cash requirement for the normal operation of the trust. Bi-monthly reports are presented to the Trustee directors to give them a strategic overview of the progress of both the normal business and the construction project.

### Bill

Finance manager & Company Secretary, joined the Trust 8 years ago. He combined for 6 years, lecturing at South Downs College with reporting on Trust business.



### Ying

Ying was one of Bills students and is now MAAT qualified. She has been completing the Trading Company accounts for over five years.



### Nick

Looks after the accounts of both MRAS and MRT, Nick joined one month before Bill and was formerly a Warrant Officer in the Royal Navy, where he was awarded an MBE.





# OUTREACH & LEARNING

“The Learning Team is committed to offering an exceptional experience both in the museum and as part of our outreach programme.”

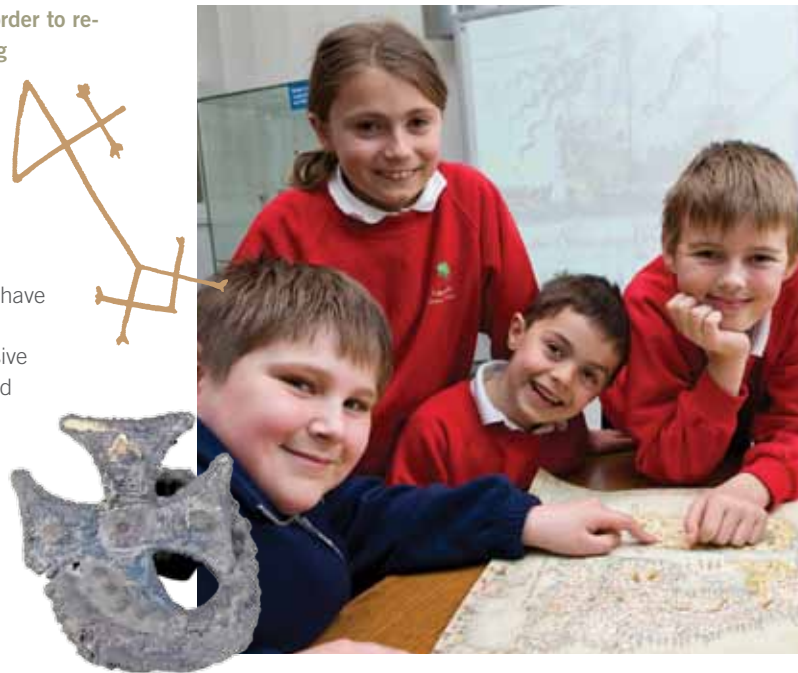


Clare and Mary

We have continued to diversify the schools programme in order to refresh our offer and attract new schools. Encouraging young people to write poetry based on the artefacts and story of the Mary Rose is our latest venture. For schools unable to visit, outreach days are available.

Thanks to a generous grant from The Lloyd's Register Educational Trust, there is a strong focus on science, technology, engineering and maths. New hands-on maths sessions based on everyday problems facing the ship's crew have proved very popular with primary schools. Another new initiative is an after-school science club for local comprehensive pupils. At the end of one six week programme, a student said "I loved science and now I love it even more." For schools unable to visit us, the free loan box service has been supplemented by virtual meetings using Skype.

A pupil from Wales said: "In the Skype session we asked the questions that we wanted to know the answers to. It worked well because we couldn't get to the museum because it's so far away."



Out of hours education is an important area of growth. Youth groups, including Brownies have enjoyed exclusive twilight activities at the museum in order to gain particular badges. Special Saturday workshops for able pupils have become a regular feature. During school holidays, we ran family activity sessions for looked-after children in Hampshire and Portsmouth children with disabilities.

The community outreach programme to groups with special needs goes from strength to strength. Stroke associations, hospices, visually-impaired groups, adults with learning difficulties and Alzheimer's and Dementia patients across the south of England have all benefited from visits. Handling real and replica artefacts stimulates discussion, interest and interaction.

An Age UK group leader said "People who usually find it hard to engage with activities were really enjoying the session. The age range of our service users is 65 – 97 and it is unusual to find one activity which captivates everyone as this did. We all learned a lot and had a jolly good laugh." These visits have led to several people with special needs volunteering in the museum.



We were shortlisted for a Museum and Heritage Show Award for Excellence 2010 for our 'Get on Board' programme with Portsmouth Football Club funded by the Premier League/ Professional Footballers' Association and the Football Foundation.

Over the course of the three year project, we will have reached nearly 2000 Portsmouth school children.

One teacher commented: "The children enjoyed how links were made between Tudor times and Portsmouth Football Club. The team building games and gun run were really fun and exciting."

Another said: 'This was a great success and the children (and teachers) will remember this for years to come.'

As a result of these achievements, we have been asked to provide INSET training for teachers, placements for teacher training students and continuing professional development for other museum professionals.



Trevor receiving an award from the Mayor of Portsmouth



The Hardworking Crew

# MUSEUM HOSTS

“The visitor experience has been constantly evolving since the closure of the ship hall.”

The current museum has been enhanced with a variety of new opportunities for visitors, including extra artefact handling tables, special events and new displays showing the ship's dog and the skull of an archer. Many of the changes were inspired by suggestions from staff and volunteers.

The focus has been bringing the extraordinary collection of artefacts to life through ship-board characters, such as the Barber-Surgeon and Carpenter. A combination of replica artefacts and input from our guides has reduced the impact of the temporary removal of original objects as part of the on-going conservation and mount-making programme for the new museum.

These new ways of working encourage staff and volunteers to enhance their skills and knowledge. This will help prepare for new and exciting ways of engaging visitors in the new museum.



## Yvonne



Yvonne has been with the Trust for 9 years and is one of our museum hosts who welcomes our visitors, she also stands in as a Relief Duty Manager on occasions.

## Terry



After retiring from the navy, Terry joined us as a Senior Visitor Services Manager and has been with the Trust for the last 12 years.

## Sue



Sue has made her way up from part time museum host to Museum Services Manager over the last 12 years. Her major achievement has been the success with the corporate hospitality by introducing the Tudor banquets.

The Hardworking Crew

# THE VOLUNTEERS

“Volunteers are essential to the operation of the Mary Rose Trust. The Trust owes a huge debt of gratitude to those who generously give their time and expertise.”

This year has seen the sad loss of two staunch supporters of the Trust. Eric Sivyer who passed away in April 2011 was a volunteer diver on the ship and worked in the museum talking to visitors about his experiences. Sylvia Townson, who died in May 2011, had worked with the Trust for over 30 years.

Our group of volunteers is growing and diversifying with new specialist volunteers in education and fundraising. As we move towards the opening of the new museum we look forward to developing this important role.



## Roger



Roger joined the team of volunteers over three years ago and takes delight in talking to our visitors from one of our many handling tables.

## David



David is one of our long serving volunteers who has been with the Trust for 17 years. As an ex-army officer he has been able to use his expertise in helping develop the navigation handling table.

## Mike



Mike is a recently retired school teacher who has been working closely with the Learning team bringing exciting and innovative ideas to promote new workshops.



## The Hardworking Crew

# CONSERVING THE MARY ROSE AND HER COLLECTION OF TUDOR ARTEFACTS.

“We are responsible for the care and safe keeping of the Mary Rose ship and the magnificent collection of 19,000 artefacts that have been recovered from the wreck site.”



The remains of the hull of the Mary Rose around which the new museum is being built is at the moment sealed in a “Hot Box” to contain the final phase of polyethylene glycol spraying. PEG is a synthetic organic wax that bulks up the damaged cellular structure of the wood. Maintaining the conservation process whilst the new museum is being built around us requires constant supervision. The controlled air drying will also be undertaken in the “Hot Box” until the ship is ready to be seen dry and in open display for the first time since 1545.

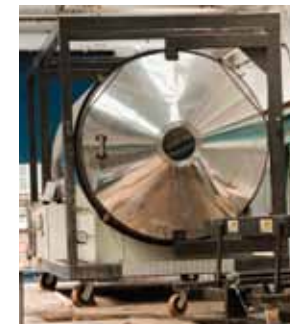
Away from the ship we have the largest conservation workshop for maritime archaeological wood in Europe. Smaller objects than the ship, which has to be sprayed, can be immersed in tanks of PEG. The process involves replacing the water in the cellular structure of the wood with a supportive wax matrix. When no more PEG is absorbed the wood can be dried in a vacuum freeze drying chamber. This process removes the remaining water slowly in controlled conditions so as not to damage the cellular structure of the wood.

In the existing museum we are only able to display 7% of our collection. The new museum will have over 60% of our collection on display. In preparation for the new museum we are storing all of this reserve collection in special atmospherically controlled conditions. Every stage of the process is carefully recorded and filed in our archives.

We have been working for over twenty years for this moment and we look forward to the exciting prospect of seeing all our work on display.



“The process of conservation is undertaken in our dedicated conservation building.”



## Simon

Simon is the Collections Officer, joined the Trust in 1987 from Portsmouth City Museum. Simon has run in every single Great South Run since 1990.



## Sue

Conservator has been with the Trust since 1980 and is one of the longest serving members of the hardworking team. Sue is responsible for the conservation and reconstruction of the 19,000 artefacts within the Mary Rose collection.



## Glenn

Conservation Manager, with the Mary Rose Trust since 1990 is responsible for the ongoing Mary Rose Hull conservation programme and eventual treatment of the remaining Mary Rose artefact collection.



## Mark

Head of Collections, has worked at the Mary Rose Trust since 1983 and is responsible for conserving the hull and artefacts. He is involved with major research projects at the Universities of Oxford, Cambridge, Portsmouth and Kent. He is visiting Professor at the University of Kent.



## Helen

Helen is a metals conservator, joined the Trust in November last year, Helen joined us from the National Museum of Ireland, her degree was from the Conservation School at Cardiff University.



## The Hardworking Crew THE SHOP



“2010 has been a busy year for the Mary Rose Shop.”



Although the number of visitors has reduced during the period that the ship has been under wraps, last year finished with the successful launch of Mary Rose pens which sold out within a few days!

We are currently preparing for the transition to the new museum in late 2012 and refocusing the number and type of merchandise to ensure an exciting range of items is available in the new shop. Our aim is to step away from items normally found in gift and souvenir stores and give ours a definite Mary Rose feel; for example, by creating items like the ship's dog "Hatch" as a mascot which originally had to earn its keep on board as the ship's rat.

The new branding is currently being introduced as the new lines arrive and we want to establish the logo as a brand of excellence which we hope will prove popular both in our shop and also for purchases on the Mary Rose website.

### Pat

Pat has spent many years in the retail sector, arriving at the Mary Rose in April 2003. Starting as a supervisor, later becoming the retail manager and buyer.



### Christine

Christine returned to England from having spent many years in Canada. In September 2003, Christine joined us, and works part time as a retail assistant.



### Hazel

Hazel recently retired from working as a part time retail assistant with the gift shop. After a short break, returned to us as a volunteer working 1 day a week.



### Darren

Darren graduated from university with a degree in History. Joining the gift shop as a retail sales assistant in September 2002, and taking over as supervisor about 4 years ago.



### James

James is the most recent recruit, he has just left college and is looking into a career in the police force. He works as a retail assistant at the weekends and helps out throughout the summer months. James has been doing this for 2 years.



## The Hardworking Crew MISSION & OBJECTIVES

The original objectives, as summarised from the Memorandum of Association of the Mary Rose Trust when it was formed in 1979, were:

- To find, record, excavate, raise, bring ashore, preserve, publish, report on and display for all time in Portsmouth the Mary Rose
- To establish, equip and maintain a museum or museums in Portsmouth to house the Mary Rose and related or associated material
- To promote and develop interest research and knowledge relating to the Mary Rose and all matters relating to the underwater cultural heritage

All for the education and benefit of the nation

In 2004 Strategic Goals were added:

- To conserve and display the Mary Rose and her artefacts to as wide an audience as possible as one of the major visitor attractions within Portsmouth Historic Dockyard
- To maintain the archives and publish archaeological information and to promote and make accessible, research and knowledge relating to the Mary Rose
- To provide world class expertise for maritime archaeology and the conservation of material recovered underwater
- To enable lifelong learning and outreach within the overall context of Portsmouth Historic Dockyard
- To be self-sustaining through visitor income and income generation through both trading companies and fundraising while managing operating costs effectively
- To create and maintain a professionally enriching work environment for employees and volunteers, recognising their key contribution

“To create a sensational and sustainable museum where the Mary Rose and her artefacts will tell their unique story.”





SUPPORTERS, BENEFACTORS AND PATRONS

Flag Officers of the Mary Rose

Admirals

Mr M Aiken  
Mr T Bachmann  
Sir David Cooksey  
Mr A Gaydamak  
The Rt. Hon. Lord Illiffe  
Mr A C Lovell  
Mr C Richards OBE DL  
Mr J N Robinson  
Lady Stevenson

Vice Admirals

Mr M Campbell  
The Hon Charles Harris  
Mr P Mallinson  
Mr R Morse  
Mr M Slade  
Mr D Thorne  
Mr E Byers  
Mr N McNair-Scott  
Mr C J Sansom

Rear Admirals

Mr R Atterbury  
Mr D C Hathaway

Founding Commodore

HRH The Prince of Wales

Commodores

Mr L F Allery  
Mr P Andreae

Mr M Ashley  
Mrs S Axtell  
Mrs C Balfour  
Mr M Blinco  
Mr T A Bolt  
Rt Hon the Lord Brabourne  
Mr C Brandon  
Mr J Brookes  
Mr K Brown  
Mr J Brown  
Mr A Brownsword  
Mrs J M Brzozowska  
Mr J E Butler  
Mr J Cazalet  
Mr I Cheshire  
Rt Hon the Countess of Clarendon  
Commodore J Cooke OBE RN  
Sir David Davies  
Mr M Deeny  
Mr & Mrs P Dobbs  
Mr J Gestetner  
Mr J Granite  
Ms J E Green  
Mr G Hunt  
Mr A Joy  
Mr M Langdon  
Mr R Legget  
Rear Admiral J Lippiett CB MBE  
Mr M Loveday  
Mrs L Loveday  
Miss E Lovell  
Miss L Lovell  
Viscount Oliver Lymington  
Mr N McGrigor

Mr M J Meacock  
Dr D Moore  
Mr C Murray  
Mr F O'Sullivan  
Mr D Palmer CBE  
Countess of Portsmouth  
Dr D Price CBE

Mr N Purse  
Mrs S Reeves  
Mr R Reynolds, Jnr  
Lady Rivett-Carnac  
Mr J Roe

Mr I Ronald  
Mr C Shaw  
Mr A Speirs  
Mr N Stanley  
Mr A N R Stannah  
Dr D Stubbs  
Lady Tidbury

Mr H Tidbury  
Mr R H Tuttle  
Rt Hon the Earl of  
Portsmouth DL  
Mrs C Warner  
Mr C Watson  
Mr P G H Wilson  
Mr C W V Wright  
Mrs A Wright

Charitable Trusts, Foundations and City Liveries

Basil Samuel Charitable Trust  
Bernard Sunley Foundation  
The Carew Pole

Charitable Trust  
Carpenters Company  
The Calleva Foundation  
Designation Challenge Fund  
De Laszlo Foundation  
Drapers' Company  
Fairfield Charitable Trust  
Fidelity Foundation  
Sir John Fisher Foundation  
Foyle Foundation  
Garfield Weston Foundation  
Gosling Foundation  
Hartnett Conservation Trust  
Charles Hayward Foundation

The Headley Trust  
Heritage Lottery Fund  
Hobson Foundation  
The Idlewild Trust  
John Coates Charitable Trust  
Lazard Charitable Trust  
Leathersellers' Company  
Logie Charitable Trust  
The Lloyd's Register  
Educational Trust  
Portsmouth City Council  
Scorpion Trust  
Sir Siegmund Warburg's  
Voluntary Settlement  
Ann Susman Charitable Trust  
Stavros Niarchos Foundation  
Stella Symons Charitable Trust  
Turner's Company  
Tylers & Bricklayers Company  
The Vandervell Foundation



Wellcome Trust  
The Welton Foundation  
Wolfson Foundation

Corporate Support

Action Stations  
BAE Systems  
B&Q plc  
Barclays Capital  
Bell Pottinger Business & Brand  
Bishop's Printers  
Blake Laphorn  
Bouygues UK  
County Caterers  
CWO  
Davis Langdon  
DHL International  
Diamond Light Source Ltd  
Diverse Productions  
(Colin Fox)

Gifford PLC  
Greenhill & Co  
International LLP  
Hampshire County Council  
Hampton Court Palace  
Historic Royal Palaces  
INEOS  
Instron  
JEOL UK Ltd  
Jungheinrich Ltd  
The Kennel Club  
Kingfisher Plc  
LV=  
Macmillan Publishers Ltd  
Mary Rose Society  
Medieval Society  
Motivation  
National Museum of the  
Royal Navy  
Nauticalia

Oxford Instruments  
Pooley Sword Ltd  
Portakabin  
Pringle Brandon  
Richard Neave  
The Royal Collections  
The Royal Mint  
Sainsbury's Portsmouth  
Second London Wall  
Serco Marine Services  
Shirley Farmer Associates  
Southern Cooperative  
Southern Water Corporation  
The Portsmouth News  
Tryon Galleries  
Warings Construction  
Wightlink Ltd  
Wilkinson Eyre

With Grateful Thanks

The Second Sea Lord and  
Commander in Chief Naval Home  
Command  
Naval Base Commander,  
Portsmouth  
Portsmouth Historic Dockyard  
Portsmouth Naval Base  
Property Trust  
Portsmouth Naval Base - Health  
Safety and Environment group  
HMS Victory  
HMS Warrior 1860  
Ministry of Defence  
Dr Des Barker  
Mrs Joan Bergin  
Dr Paul Garside (British Library)  
Dr Keith Watson  
Stephen Hearn  
Mr Michael Hirst  
Mark Insoll  
Helen Jones



Mitchell Hayden-Cook  
University of Cambridge  
University of Kent  
University of Portsmouth  
University of Southampton  
University of Warwick  
Stuart Vine  
Westminster Abbey  
Simon Wood

Patrons of the Mary Rose

Honorary Patrons

Mr C Andreae  
Sir David Cooksey  
Dr & Mrs David Hartnett  
Colonel W Lewis  
Dr M Rule CBE  
Mr R Thornton

Life Patrons

Mr M Aiken  
Mr L F Allery  
Rt Hon Lord Ashburton KG KCVO DL  
Sir Michael Bett CBE  
Mr D Borchard  
Mr M Carvalho  
Mr J Cazalet  
Mr D Childs CBE  
Mr J A Combes  
Mr D De Laszlo  
Mr C T C Dobbs  
Mr P Dobbs  
Mr D Drake  
Mrs M Fisher  
Mr J Gestetner  
Ms J E Green  
Mr D Hagan  
Dr R Hardy CBE, D Litt  
Mr R Hoare

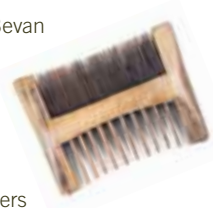
Mr & Mrs T Hopper  
Mr R D Lapraik  
Mr K P Laws MRICS  
Rear Admiral R J Lippiett  
CB MBE  
Mr M Loveday  
Mr C D Z Martin  
Mr M Matantos  
Mr & Mrs Alex McKee  
Mrs I McKee  
Mr & Mrs E Molineux  
Lady Morton  
Miss M Moseley  
Mr S Muirhead  
Mr A Palmer  
Mr S Plunkett  
Mrs S Reeves  
Mr J N Robinson  
Mr James & Dame Marion Roe  
Sir James Scott

Mr & Mrs R Tassell

Mr H Tidbury  
Mr D Tullett CBE  
Mr P Usher CBE FREng  
Mr R Wheeler  
Mr R Willey  
Mr D Williams OBE  
The Hon Jeremy Wills  
Miss A Woolley

Patrons

Mr N Abbott  
Mr J F M Bangert  
Mrs W Bateman  
Sir Timothy & Lady Bevan  
Dr J Bevan  
Mr P Bowman  
Mr C Brown  
Ms B Bumstead  
Mr & Mrs G D C Buyers



Mr & Mrs P Carter  
Mr G Coppen  
Miss S Crellin & Miss J F Goad  
Mr M Critchley  
Mrs Anne Danes  
Mr J L Davies  
Mr & Mrs R Dewhurst  
Dr A J G Dickens  
Miss Gillian Drake  
Mr & Mrs C Drayson  
Mr P Ellement  
Mr & Mrs B Elliott  
Mr A R England  
Mr & Mrs R Gladdish  
Vice Admiral M Gretton CB  
Mr & Mrs Hallett  
Sir David & Lady Hardy  
Group Captain P Harris  
Mr R F Harrison  
Mr & Mrs B Heywood  
Mrs J Ilett  
Mr R J R Kearney  
Mr D Kelly  
Professor & Mrs Korr  
Mrs H Lee  
Mrs K Lippiett  
Mr John Macmillan  
Mrs K McNutt  
Dr & Mrs D H Melzack  
Mr J Montagu  
Mr J Morgan  
Lady Nixon  
Mr & Mrs P Osborne  
Admiral of the Fleet  
Sir Julian & Lady Oswald  
Mr V Patterson  
Mr & Mrs A Platt  
Mr & Mrs C Power  
Mrs A Price  
Mr J Pringle

Mrs G Priseman  
Dr & Dr R Ryall  
Mr D Savory  
Mrs F Scott  
Mr C Shaw  
Mr J Sheffield DL  
Admiral Sir Jock Slater GCB LVO  
Mr G Smethurst  
Mr & Mrs N Stewart  
Mr R Sutcliffe  
Mr & Mrs G Swaine  
Lord & Lady Swinfen MBE  
Lady Tidbury  
Mr A Titchmarsh MBE DL  
Mr & Mrs R Townson  
Mr E J Towse  
Miss M Tyrrell MBE  
Mr & Mrs J Tyrrell  
Mr & Mrs I Walker  
Miss P Walker  
Mr & Mrs F Warner  
Mr & Mrs R Weston  
Dr H D Williams

Mary Rose Information Group

Mr D Banting  
Mrs M Braddock  
Mr D Childs CBE  
Dr K Collins  
Mrs J Critcher  
Lt W H A Davies RN Retd  
Mr A Eade  
Mr H Eatough  
Mr P Ellement  
Mr B Foster  
Mr C Fox  
Mrs C Gillions  
Mr A J Granville CBE CLH  
Mr S Griffiths  
Mr A Harvey

Lt Cdr M J Hill RN Retd  
Mr E Huke  
Mr P Lansdown  
Mrs J Mallinson  
Mr Alex McKee  
Mrs A Merrett  
Mr P Molineux  
Mr & Mrs W Moore  
Mr J Morgan  
Mrs D Perrier  
Mr P Roberts  
Dr L Runnalls & Mr I Runnalls  
Mr G M Sharp  
Mr G Smethurst  
Mr D Stevenson  
Mr E R Sutton  
Mr E Towne  
Mr A Turton  
Mr M Wakeham

Volunteers

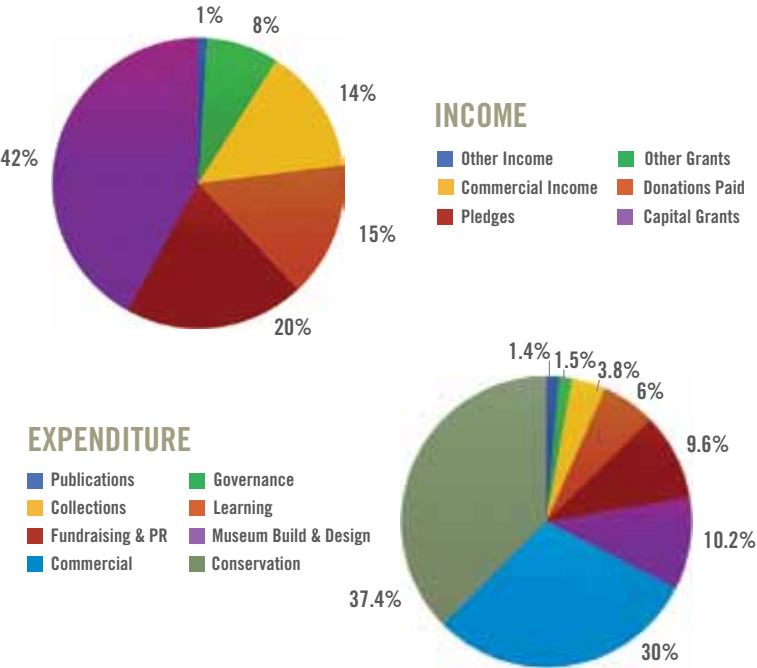
Mr L Arnell  
Miss M Barnard  
Mrs J Blair  
Mr D Banting  
Mrs J Bagnell  
Mrs P Bourne  
Mr T Burns  
Mr & Mrs C Carroll  
Mr J Collins  
Mrs P Churchill  
Mr N Clements  
Miss C Collins  
Mrs M Court  
Mrs J Critcher  
Mrs A Curnow  
Mr R Dawson  
Mrs J Dunn  
Ms L Eaton  
Ms J Evans

Mr R Giacoia  
Mr R Girling  
Mr M Harbin  
Mrs J Harrison  
Mr R Herbert  
Mrs A Hunt  
Mr R Hyson  
Miss R Justice  
Mr T Lambert  
Mrs W Martin  
Mr R Mason  
Mr T McCarthy  
Mrs M Mollins  
Mrs P Morn  
Mrs H Morris  
Mrs K Muñoz  
Mrs C Padgett  
Mr A Peach  
Mr V Phipps  
Mrs C Price  
Mrs G Priseman  
Miss A Rose  
Mr M Sibille  
Miss J Scorrer  
Miss K Slade  
Mrs V Steel  
Mr E Sivyer  
Mr D Stevenson  
Mr G Tibôt  
Mrs S Townson  
Mrs B Trigg  
Mrs J Webster  
Mrs G Wood  
Mr M Wyles  
Mr M Young

The Hardworking Crew

FINANCIAL SUMMARY

Statement of Financial Activities for the year ended 31 December 2010



“These summarised accounts are extracted from the Trustees’ report and Financial Statements for year ended December 2010, which received an unqualified auditor’s report. They were approved on 1 July 2011 and submitted to the Charity Commissioners and Registrar of Companies. These summarised accounts may not contain sufficient information to allow for a full understanding of the financial affairs of the charity.

A complete set of the report and accounts are available from The Mary Rose Trust on request.

**Michael Aiken** Chairman”

Income & Expenditure	Total 2010	Total 2009
	£	£
<b>Income Resources</b>		
Visitor related	73,787	83,137
Commercial Trading Income	1,035,277	1,143,874
Grants receivable	4,097,391	2,801,497
Donations	2,911,304	3,030,865
Donated Gifts	41,007	68,635
Invested Income	40,137	38,874
Miscellaneous	2,970	2,575
<b>Total Incoming Resources</b>	<b>8,201,873</b>	<b>7,169,457</b>
<b>Charitable Activities Expenditure</b>		
Commercial Trading	928,429	1,004,872
Learning	185,355	166,072
Conservation	1,155,771	1,021,253
Collections	118,759	114,742
Publications	44,271	49,442
Museum Build & Design	259,374	272,705
	<b>2,691,959</b>	<b>2,629,086</b>
<b>Other expenditure</b>		
Fundraising and public relations	296,425	258,538
Governance Costs	47,754	49,224
Demolish Viewing Platform	54,602	0
	<b>398,781</b>	<b>307,762</b>
<b>Total Resources Expended</b>	<b>3,090,740</b>	<b>2,936,848</b>
Net incoming/(outgoing) resources	5,111,133	4,232,609
Total funds brought forward	13,608,823	9,376.214
<b>Total funds carried forwards</b>	<b>18,719,956</b>	<b>13,608,823</b>

NOTE -

1. A major Fundraising Drive commenced in 2007 in order to raise £14 million towards the total cost of a new museum of £35 million. The results have raised £11.2 million , net of fundraising costs, of which £3.9 million has been pledged to be paid over the next 5 years.

2. The accounts have been compiled in accordance with the latest SORP

3. The grants received are significantly higher from the Heritage Lottery Fund, as we have now commissioned building the new museum.



# TRUSTEES & DIRECTORS

## Trustees and Directors as at 31st December 2010

### President:

HRH The Prince of Wales

### Vice Presidents:

The Lord Lieutenant of  
Hampshire (ex-officio)

The Lord Mayor of Portsmouth  
(ex-officio)

The Lord Brabourne

Admiral Sir Kenneth Eaton,  
GBE, KCB

### Chairman of Trustees:

Michael Aiken

### Trustee Directors:

John Brookes – Vice Chairman

Professor Sir Barry Cunliffe  
KB CBE

Caroline Dudley OBE

Alan Lovell

John Macmillan FCA

David Palmer CBE

John Robinson

Dr David Starkey CBE

Sue Wright

Rupert Grey

(Appointed Feb 2010)

### Members:

Lionel Allery JP

Councillor Cheryl Buggy

Councillor David Stephen Butler

Ian Cheshire

Ian Dahl

Sir David Hardy

Dr Robert Hardy CBE

Dr Michael Houghton

The Rt. Hon. Lord Illife

Paul Jackson

Martin Jay CBE DL

Christopher Moran

Russell Reynolds Jr.

Robert Robson

Coral Samuel CBE

Councillor Margaret Snaith

Councillor Robin Sparshatt

Daniel Thorne

Fred Warner

Dr Manon Williams MVO

### Legal and Administrative Information

Company Registration Number:  
1415654

Charity Number: 277503

### Registered Office, and principal place of business:

1/10 College Road

HM Naval Base,

Portsmouth

Hampshire,

PO1 3LX

### Chairman of the Appeal Committee:

Alan Lovell

### Chief Executive:

Rear Admiral John Lippiett, CB,  
MBE

### Company Secretary:

William Jackson, FCMA

### Bankers:

Lloyds TSB Bank plc

Commercial Banking Service  
Centre, 23/35 Castle Way,

Southampton,

Hampshire,

SO14 2BW

### Insurance Brokers:

Sutton Winson Ltd,  
Town Hall Chambers,  
Heath Road,  
Petersfield,  
Hampshire,  
GU31 4TF

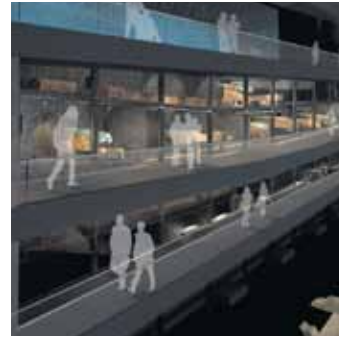
### Solicitors:

Blake Laphorn Tarlo Lyons  
New Kings Court,  
Tollgate,  
Chandlers Ford,  
Eastleigh  
Hampshire,  
SO53 3LG

### Auditors:

Compass Accountants Ltd.  
Venture House,  
The Tanneries,  
East Street,  
Titchfield,  
Hampshire  
PO14 4AR





Design & print by etrinsic



Product group from well-managed  
forests and recycled wood or fiber  
[www.fsc.org](http://www.fsc.org) Cert no. SGS-COC-003585  
© 1996 Forest Stewardship Council

The Mary Rose Trust, College Road, HM Naval Base  
Portsmouth, Hampshire, PO1 3LX

**[mail@maryrose.org](mailto:mail@maryrose.org) [www.maryrose.org](http://www.maryrose.org)**

Registered No. 1415654 England Registered Charity No. 277503

Give as you earn No. 007352 US 501 (c) (3) certification

