

## Henry VIII & Princess Elizabeth Beanie Hats



## Henry VIII Beanie Hat

### Materials

4.5mm & 5mm needles

Tapestry needle

100g black DK wool

25g yellow/gold DK wool

25g red DK wool

25g white DK wool

15g orange DK wool (for beard)

### Abbreviations

K- Knit

P- Purl

K2tog – Knit two stitches together

KFB—Knit through front and back of same stitch

Stockinette stitch—Work alternative rows of knit and purl stitches

## Henry VIII Hat

In black, and using 4.5mm needles, cast on 100 stitches.

Row 1: K1, P1 to end.

Repeat this row 5 times.

Change to 5mm needles.

Rows 1-21: Starting with a knit row, work in stockinette stitch from the Henry VIII Hat Chart. When carrying colours across keep wool relatively loose to enable hat to stretch when being worn.

In black, continue in stockinette stitch until hat measures 14cm. From the cast on edge.

### Shaping crown

Row 1: K8, K2tog, repeat to end (90 stitches).

Row 2: for this and every alternating row, Purl.

Row 3: K7, K2tog, repeat to end (80 stitches).

Row 5: K6, K2tog, repeat to end (70 stitches).

Row 7: K5, K2tog, repeat to end (60 stitches).

Row 9: K4, K2tog, repeat to end (50 stitches).

Row 11: K3, K2tog, repeat to end (40 stitches).

Row 13: K2, K2tog, repeat to end (30 stitches).

Row 15: K2tog, repeat to end (15 stitches).

Break off yarn and pass through remaining 15 stitches using tapestry needle. Sew up back of hat using mattress stitch.





### Henry's Beard (optional)

In orange and using 5mm needles, cast on 10 stitches.

Rows 1-8: Knit.

Row 9: KFB, K1, repeat to end (15 stitches).

Row 10: Knit this and every alternative row until otherwise instructed.

Row 11: KFB, K1, repeat to last stitch, K1 (22 stitches).

Row 13: KFB, K1, repeat to end (33 stitches).

Row 15: KFB, K15, KFB, K15, KFB (36 stitches).

Row 16-18: Knit.

Row 19: K11, cast off 13 stitches, K11.

Row 20: K11, cast on 13 stitches, K11.

Rows 21-22 Knit.

Row 23: K11, cast off 13, K11.

Row 24: Focusing on first 11 stitches, K9, K2tog (10 stitches). Leave the other 11 stitches on the needle to come back to later.

Knit 30 rows (or until side length reaches the top of the ear when beard is held in place on the face), then cast off.

Cut yarn and re-join to remaining 11 stitches.

Row 1: K2tog, K9 (10 stitches).

Knit 30 rows (or until it matches the length of the other side), then cast off.

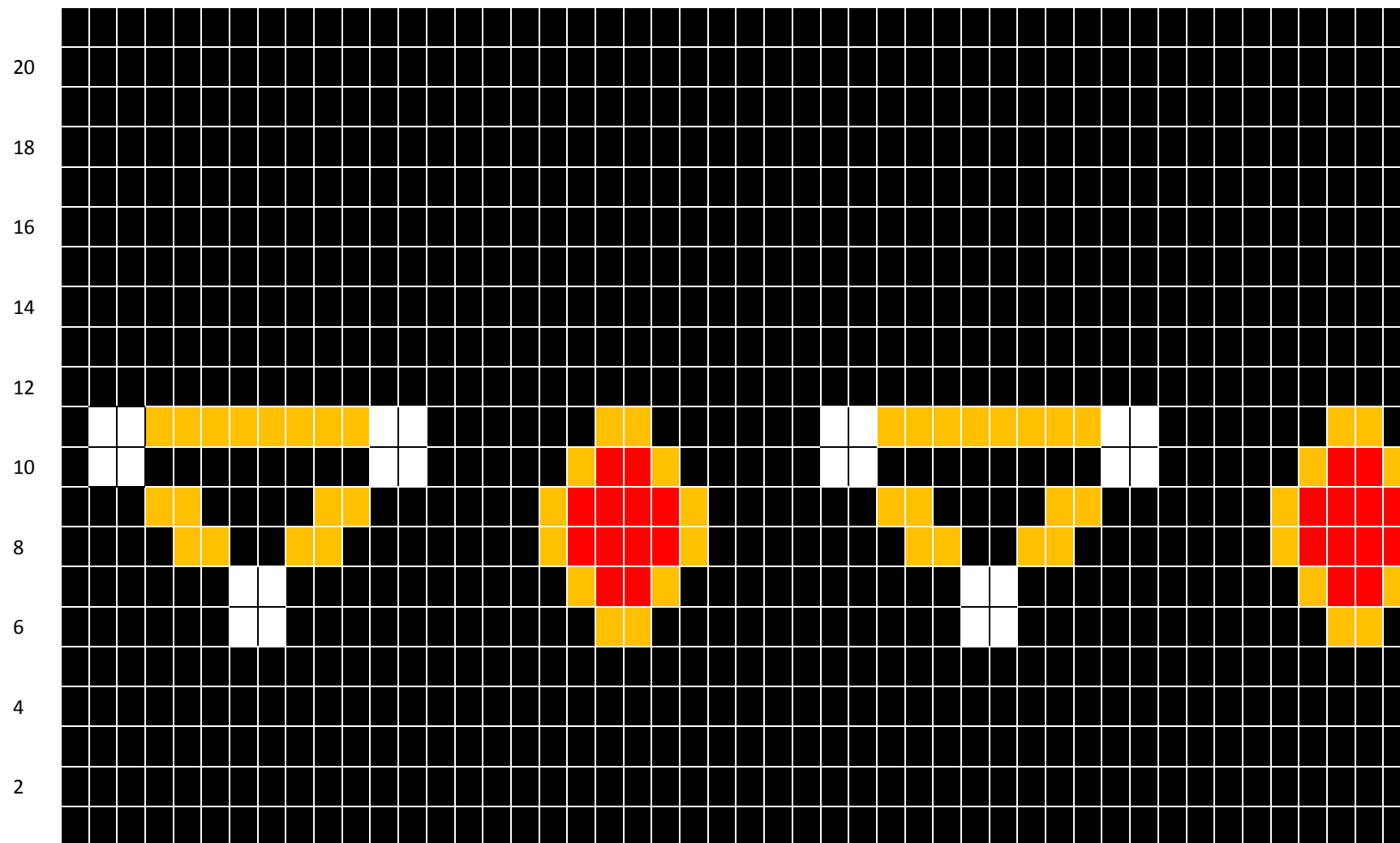
### Make up

Sew beard to hat, attaching it inside above the rib and in line with top of ear. Make a white pom-pom about 8.5cm in diameter and sew to top of hat.





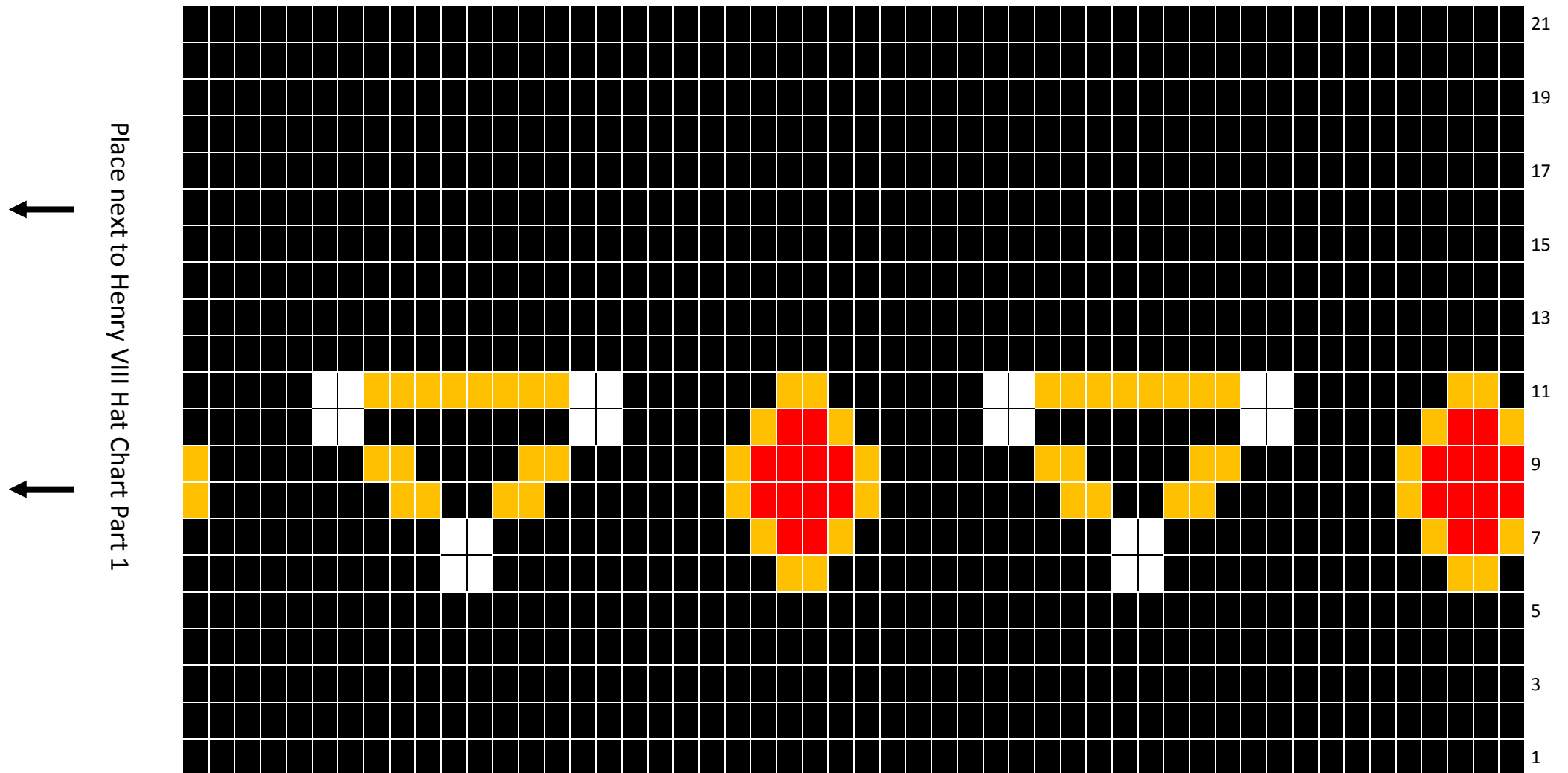
## Henry VIII Hat Chart Part 1



Place next to Henry VIII Hat Chart Part 2



## Henry VIII Hat Chart Part 2





## Princess Elizabeth Beanie Hat

### Materials

4.5mm & 5mm needles

Tapestry needle

30g black DK wool

25g yellow/gold DK wool

25g red DK wool

25g white DK wool

### Abbreviations

K- Knit

P- Purl

K2tog – Knit two stitches together

Stockinette stitch—Work alternative rows of knit and purl stitches

### Pattern

In yellow, and using 4.5mm needles, cast on 100 stitches.

Row 1: K1, P1 to end.

Rows 2 & 3: K1, P1 to end.

Rows 4 & 5: Change to white wool, K1, P1 to end.

Row 6: Change to yellow wool, K1, P1 to end.

Change to 5mm needles.

Rows 1-21: Starting with a knit row, work in stockinette stitch from the Princess Elizabeth Hat Chart. When carrying colours across keep wool relatively loose to enable hat to stretch when being worn.

In black, continue in stockinette stitch until hat measures 14cm from cast on edge.

### Shaping crown

Row 1: K8, K2tog, repeat to end (90 stitches).

Row 2: for this and every alternating row, Purl.

Row 3: K7, K2tog, repeat to end (80 stitches).

Row 5: K6, K2tog, repeat to end (70 stitches).

Row 7: K5, K2tog, repeat to end (60 stitches).

Row 9: K4, K2tog, repeat to end (50 stitches).

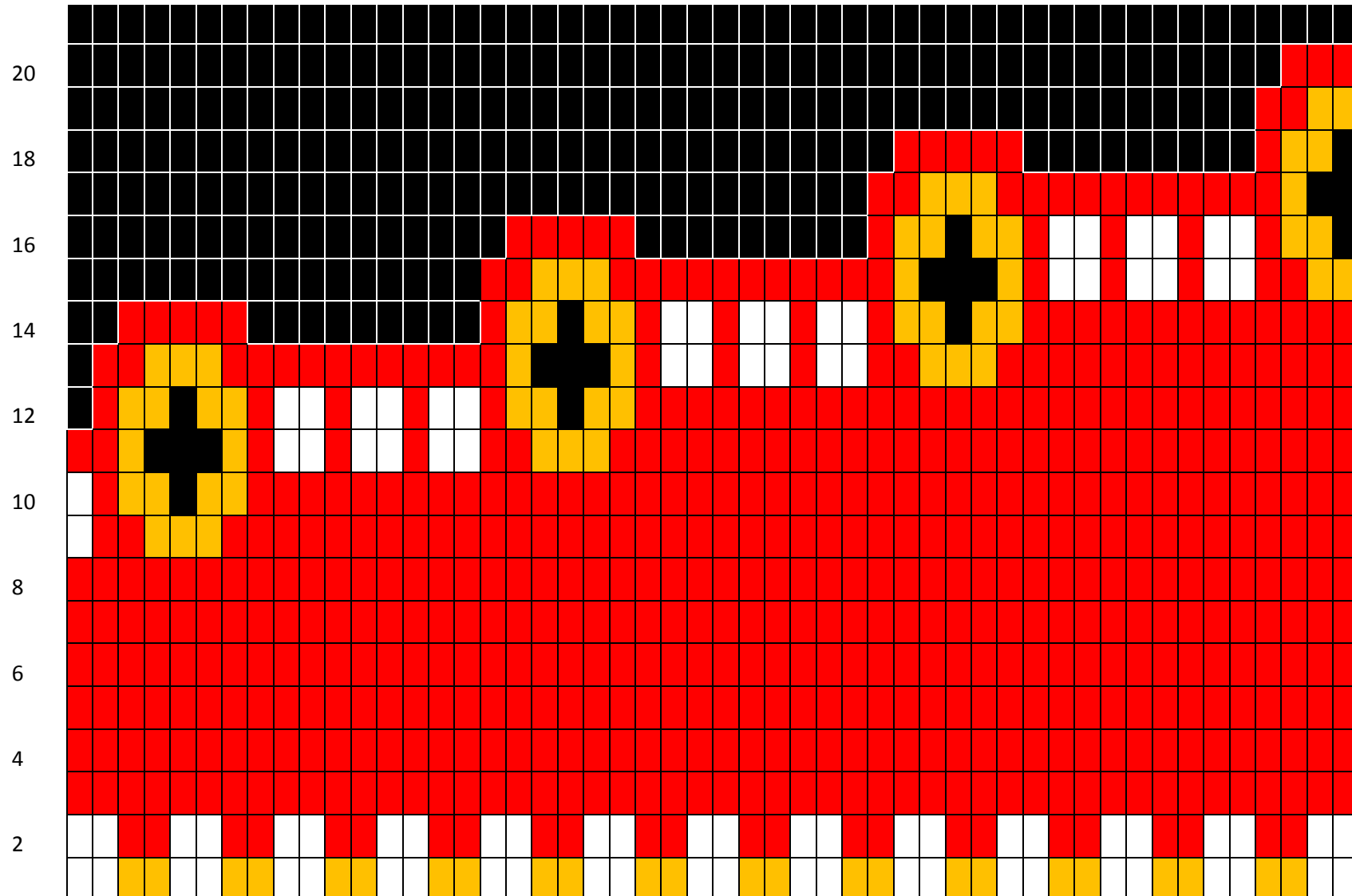
Row 11: K3, K2tog, repeat to end (40 stitches).

Row 13: K2, K2tog, repeat to end (30 stitches).

Row 15: K2tog, repeat to end (15 stitches).

Break off yarn and pass through remaining 15 stitches using tapestry needle. Sew up back of hat using mattress stitch.

# Princess Elizabeth Hat Chart Part 1



Place next to Princess Elizabeth Hat Chart Part 2





## Princess Elizabeth Hat Chart Part 2

Place next to Princess Elizabeth Hat Chart Part 1

